



# **Dubbo**

# **Local Emergency**

# **Management Plan**

November 2019



## Part 1 - Administration

### Authority

The Dubbo Local Emergency Management Plan (EMPLAN) has been prepared by the Dubbo Local Emergency Management Committee in compliance with the State Emergency and Rescue Management Act 1989.

APPROVED

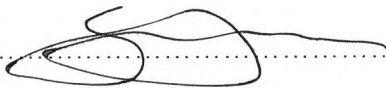


Chair

Dubbo Local Emergency Management Committee

Dated: 5/12/19

ENDORSED



Chair

Central West Regional Emergency Management Committee

Dated: 12.12.19

## Contents

Part 1 - Administration.....	2
Authority .....	2
Contents .....	3
Purpose .....	4
Objectives.....	4
Scope .....	4
Principles.....	4
Test and Review Process .....	5
Part 2 - Community Context.....	6
Annexure A - Community Profile .....	6
General .....	6
Landform and Topography.....	9
Climate.....	12
Population and People .....	14
Transport Routes and Facilities .....	27
Economy and Industry .....	34
Annexure B - Hazards and Risks Summary .....	42
Annexure C - Local Sub Plans, Supporting Plans and Policies .....	47
Part 3 - Restricted Operational Information.....	48
Annexure D - Community Assets.....	48
Key Resources and Locations .....	48
NEIGHBOURHOOD SAFER PLACES (NSP) .....	64
RECOVERY CENTRES: .....	64
COMMUNITY BRIEFING FACILITIES:.....	64
Key Infrastructure:.....	65
Annexure E - Vulnerable Facilities List.....	74
Annexure F - Consequence Management Guides.....	94



## Purpose

Details arrangements for, prevention of, preparation for, response to and recovery from emergencies within the Dubbo Local Government Area (Dubbo City based).

It encompasses arrangements for:

- Emergencies controlled by combat agencies;
- Emergencies controlled by combat agencies and supported by the Local Emergency Operations Controller (LEOCON);
- Emergency operations for which there is no combat agency; and
- Circumstances where a combat agency has passed control to the LEOCON.

## Objectives

The objectives of this plan are to:

- Define participating organisation and Functional Area roles and responsibilities in preparation for, response to and recovery from emergencies;
- Set out the control, coordination and liaison arrangements at the Local level;
- Detail activation and alerting arrangements for involved agencies; and
- Detail arrangements for the acquisition and coordination of resources.

## Scope

The plan describes the arrangements at Local level to prevent, prepare for, respond to and recover from emergencies and also provides policy direction for the preparation of Sub Plans and Supporting Plans:

- Arrangements detailed in this plan are based on the assumption that the resources upon which the plan relies are available when required; and
- The effectiveness of arrangements detailed in this plan are dependent upon all involved agencies preparing, testing and maintaining appropriate internal instructions, and/or standing operating procedures.

Note: The Dubbo EMPLAN covers the area formerly known as Dubbo City Council.

## Principles

The following principles are applied in this plan:

- a. The Emergency Risk Management (ERM) process is to be used as the basis for emergency planning in New South Wales. This methodical approach to the planning process is to be applied by Emergency Management Committees at all levels.
- b. Responsibility for preparation, response and recovery rests initially at Local level. If Local agencies and available resources are not sufficient they are augmented by those at Regional level.
- c. Control of emergency response and recovery operations is conducted at the lowest effective level.



- d. Agencies may deploy their own resources from their own service from outside the affected Local area or Region if they are needed.
- e. The Local Emergency Operations Controller (LEOCON) is responsible, when requested by a combat agency, to coordinate the provision of resources support. LEOCONs would not normally assume control from a combat agency unless the situation can no longer be contained. Where necessary, this should only be done after consultation with the Regional Emergency Operations Controller (REOCON) and agreement of the combat agency and the appropriate level of control.
- f. Emergency preparation, response and recovery operations should be conducted with all agencies carrying out their normal functions wherever possible.
- g. Prevention measures remain the responsibility of authorities/agencies charged by statute with the responsibility.

## Test and Review Process

The Dubbo Local Emergency Management Committee (LEMC) will review this Plan every three (3) years, or following any:

- Activation of the Plan in response to an emergency;
- Legislative changes affecting the Plan; and
- Exercises conducted to test all or part of the Plan.

## Part 2 - Community Context

### Annexure A - Community Profile

#### General

The Local Government Area (LGA) of Dubbo Regional Council (Dubbo based) covers an area of 3,425 square kilometres.

Dubbo includes the townships and localities of Angle Park, Ballimore (part), Barbical, Belgravia, Bencubbin, Beni, Benolong, Boothenna, Brocklehurst, Bruah, Bunglegumbie, Burrabadine, Butlers Falls, Coolbaggie, Delroy, Dilladerry, Dubbo, Dundullimal, Dungary, Durraween, Elong Elong (part), Erskine, Eschol, Eulomogo, Eumungerie, Firgrove, Goan Creek, Hyandra, Jaymark, Mendooran (part), Minore, Mogriguy, Mountain Creek, Mugga Hill, Murrumbidgee, Narromine (part), Newbury Park, North Burrabadine, North Dubbo, Nubingerie, Oakdene, Old Harbour, Rawsonville, Raymond Hill, Richmond, Rocky Road, Sappa Bulga, Terramungamine, The Pinnacle, The Springs, Tomingley (part), Toongi, Troy, Warrie, Westella, Wongarbon, Woodstock and Yarandale.

Dubbo is the administrative centre for the LGA area.

Dubbo is approximately 400 km by road north-west of Sydney.

Population for the LGA is: 69,414 people.  
[2016 Census]

Dubbo is approximately 275 metres (902 feet) above sea level but elevations range across the LGA between 260 metres in the west to 580 metres in the south.

Dubbo is the largest populated centre in the Orana Region of NSW.

Dubbo is considered to be the major shopping centre for the surrounding regional areas in the Central and Far Western Districts of NSW, and serves an estimated population catchment of 130,000 people.

Dubbo is a major road and rail transportation hub within NSW and the Region, being located at the intersection of the Golden, Mitchell and Newell Highways and on the western and north-western rail lines. These highways and rail systems link north to Brisbane; south to Melbourne; east to Sydney and Newcastle; and west to Broken Hill and Adelaide (through to Perth).

The EMPLAN incorporates the City of Dubbo itself and the villages of:

- Wongarbon
- Brocklehurst
- Mogriguy
- Eumungerie
- Ballimore

Outside of Dubbo and the villages, the rural areas consist of numerous rural residential estates; smaller land holdings (hobby farms); broad-acre farmland and heavily forested conservation areas.

The LGA is bordered by the LGAs of:

- Narromine Shire (west)
- Gilgandra Shire (north)
- Warrumbungle Shire (north and north-east)
- Midwestern Regional Council (north-east)
- Cabonne Shire (south).

Dubbo LGA and all adjoining LGAs are located within the CENTRAL WEST REGIONAL Emergency Management Committee region.

The City boundaries extend to points approximately:

- 44 kilometres north of Dubbo on the Newell Highway;
- 46 kilometres north-east of Dubbo on the Golden Highway;
- 48 kilometres south of Dubbo on the Obley Road;
- 28 kilometres south-west of Dubbo on the Newell Highway; and
- 26 kilometres west of Dubbo on the Mitchell Highway.

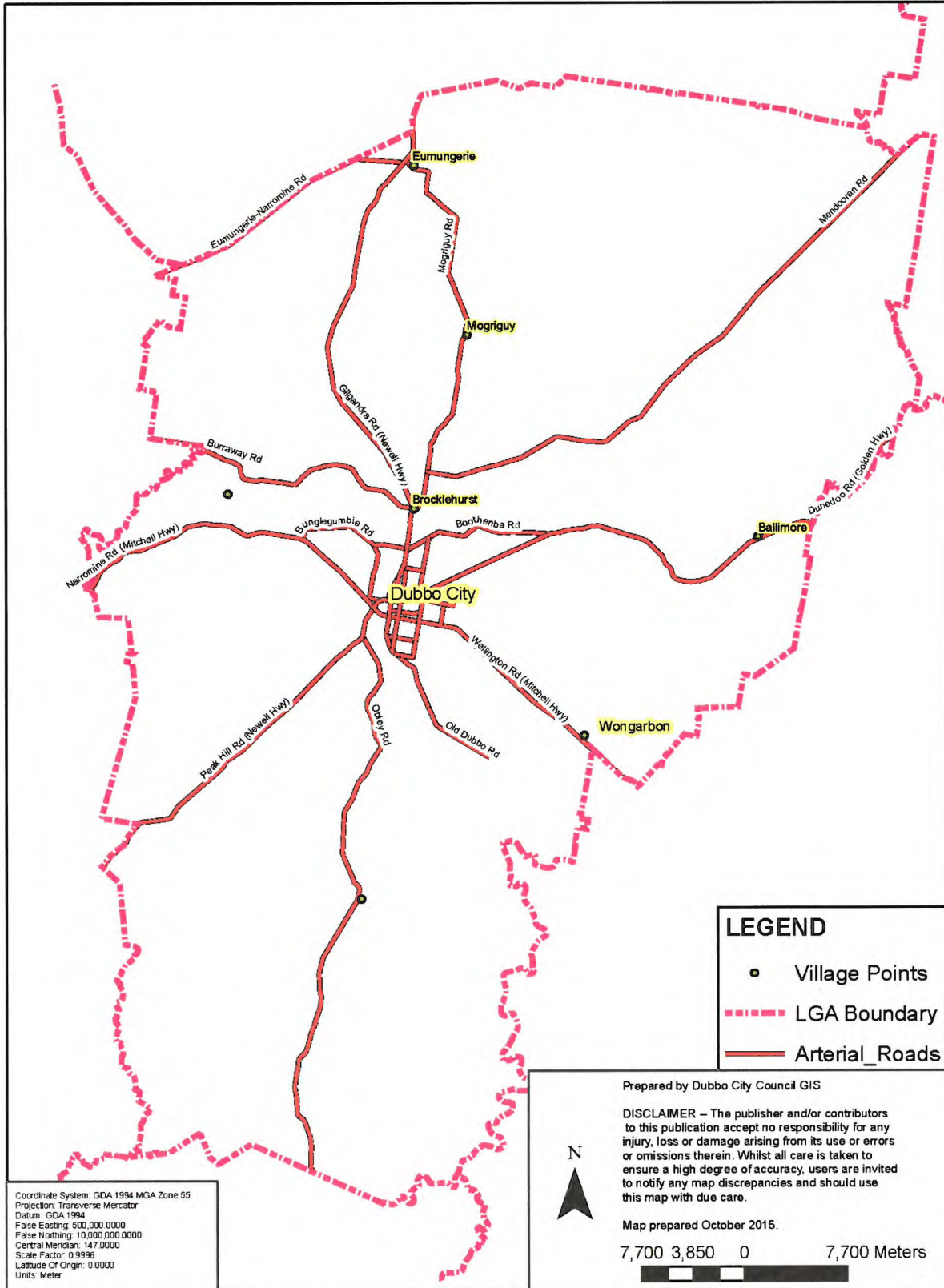
The LGA area is within the:

- Lower Central West Plains Weather District.



MAP - Dubbo EMplan Area and Arterial Road Network

# DUBBO CITY COUNCIL LOCAL GOVERNMENT AREA & ARTERIAL ROAD NETWORK



## Landform and Topography

The area is located within Central West NSW and lies within the catchments of the Macquarie, Castlereagh and Bogan Rivers. The area is substantially flat to undulating.

## Vegetation

Generally open grasslands and cropping in the rural area with large areas of forested conservation areas adjoining a number of the villages.

The area is characterised by pastoral lands and cropping lands dominated by grasses. The north-eastern quadrant of the LGA area remains uncleared, and consists of forests, woodlands and scrublands on the sandstone-derived land systems.

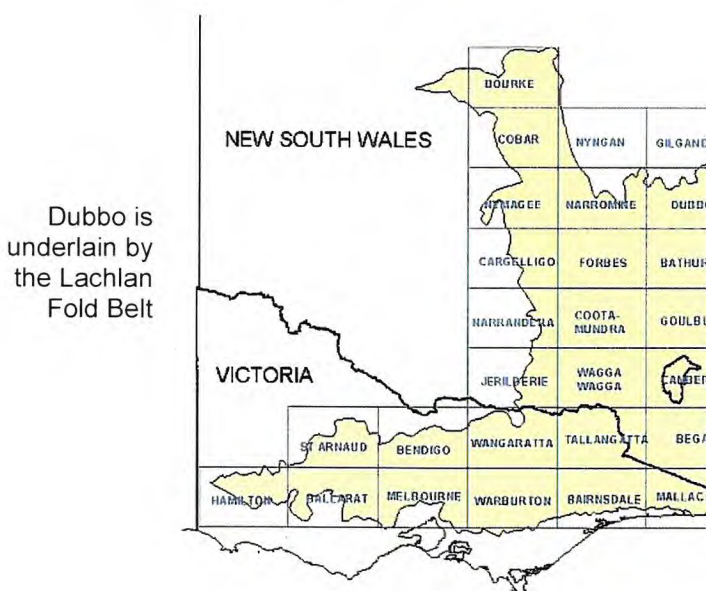
The dry sclerophyll forested areas are principally Ironbark, Box, and Cypress forests.

The Ironbark forests are the most prevalent on both private land and in State Forests; however they have a lower total tree height on the ridge tops where Black Cypress, Mallee and Broom Plains also occur. This provides little distance between the shrub layer and the tree crown (2 to 6 metres), and provides almost continuous fuel under extreme conditions, even though the ground fuel may only be between 5 and 10 tonnes per hectare. In the shallow valleys, the Ironbarks, Boxes and Gums are taller, and there is a much larger distance from the shrub layer to the tree canopy (6 to 10 metres).

White cypress is sometimes present in these forests. The Box Forests generally carry a much lower shrub layer. The White Cypress forests occur on the better soil types often associated with Narrow Leafed Ironbark. The timbered and grass lands are very conducive of Grass Fire and Bush Fire events.

## Geology

Dubbo overlies the Lachlan Fold Belt. Dubbo area has experienced at least five (5) minor earthquakes in historic times.





## LAND COVER

Description/classification	Area (ha)
Extraction sites	114
Inland waterbodies	14
Irrigated pasture	200
Rainfed cropping	61,297
Rainfed pasture	62,846
Sedges - open	nil
Tussock grasses	1,613
Shrubs - sparse	1,234
Trees - closed	nil
Trees - open	53,841
Trees - scattered	564
Trees - sparse	158,612
Built-up area	2,226

Source: ABS 2015 - 2008 figures

The timbered and grass lands are very conducive of grass fire and bush fire events. The local area has on average 70 to 100 bushfires/grassfires per year, of which 2 to 5 on average (depending on seasonal conditions) can be considered to be a major fire.

## WATERWAYS

The major waterway in the area is the Macquarie River.

A number of non-perennial streams contribute to the Macquarie River system.

The Macquarie River travels in a south-north direct through Dubbo. The River divides the City.

Burrendong Dam is located on the Macquarie River, upstream of Dubbo and Wellington.

The Cudgegong River, which rises in the Great Dividing Range above Rylstone and drains an area of 3,880 square kilometres, is a major tributary of the Macquarie River. The Cudgegong River flows into Burrendong Dam via Windamere Dam.

The Macquarie River is formed near Bathurst, following the joining of the Fish and Campbells rivers, and extends north-west to the Barwon River upstream of Bourke. The major towns within the Macquarie Valley upstream of Dubbo are Bathurst, Orange and Wellington. The major towns within the Macquarie Valley downstream of Dubbo are Narromine and Warren.

The volume and pattern of flows in the Macquarie River have been significantly altered by the construction and operation of Windamere Dam on the Cudgegong River and Burrendong Dam on the Macquarie River. Water in these dams is used to supply downstream water extractors for crop/pasture irrigation and water supplies.

Traditionally, natural river flows were highest between June and October, and lowest in late summer and autumn. However, flows in much of the system are now at their highest during the irrigation season, which extends from October to March.



Major tributaries of the Macquarie River downstream from Burrendong Dam include the Bell (joins the Macquarie River at Wellington) and the Little River (joins the Macquarie River upstream from Dubbo, between Geurie and Dubbo) and the Talbragar River (which joins the Macquarie River just downstream of Dubbo, near Brocklehurst).

All three rivers are capable of causing flooding water inflows into the Macquarie River that results in flooding at Dubbo and elsewhere within the LGA area.

The areas of the LGA draining to the Castlereagh and Bogan rivers are relatively small and characterised by creeks and streams which impact on rural areas only.

Dubbo has a history of flooding with the largest being the 1955 Flood which inundated large areas of the CBD and residential areas. This flood occurred prior to the construction of both the Burrendong and Windamere dams. Burrendong Dam is the major flood mitigation resource for areas downstream on the Macquarie River.

### **Burrendong Dam**

The Dam is located in east of Wellington, on the Macquarie River just below its confluence with the Cudgegong River.

The Dam has a catchment of 13,890 square kilometres.

The Dam construction is of a clay core, with earth and rock fill embankment.

Construction was completed in 1966.

The Dam has a storage capacity of 1,188,000 ML.

The Dam's flood storage level is 489,000 ML.

The Dam is estimated to be able to withstand a flood volume up to a Probable Maximum Flood (PMF) at the dam site.

The flow in such a flood would be vastly greater than has ever been recorded there and would be extremely rare.

Dam failure would add further to the previously existing flow volume in the river.

Dam failure is extremely unlikely because one of the saddle dams would be deliberately breached to save the main Dam. Such action would add to the seriousness of an already very severe flood downstream.

Water NSW carefully manage the flows from the Dam, especially in times of upstream flooding or periods of large inflows from rainfall.

The Dam's catchment area is so great that in major rainfall and upstream flooding events the water inflows can outpace the Dam's spillway's capacity to discharge water.

In this circumstance there is a risk (evaluated 'Remote' Risk/'Extreme Consequence) that the Dam wall could over-top and undermine the Dam's integrity, with a real potential for a dam failure.

In either a PMF/deliberate dam breaching or unexpected dam failure situation, flooding at Dubbo and surrounding areas would be very severe and extremely damaging.

## Climate

Warm temperate climate zone. Large temperature variations throughout the year.

Summers are warm to hot, and winters cool to cold that bring regular occurrences of early morning frost.

Early morning fogs are a regular occurrence in the winter months.

Night-time fog events can also occur in the colder winter and autumn periods.

The hottest months are: November to February (summer).

The coldest months are: June and July (winter).

At Dubbo:

- The average annual temperature is 24.5°C.
- The average minimum temperature is 10.2°C.
- Rainfall is slightly summer dominant, averaging 568.6 mm per annum. Ranging from 59.2 mm in December to 33.1 mm in April.

Average rainfall for the area is: 568.6 mm (22.72 inches)

Average rainy days: 57 days.

Average HIGH temperature: 24.5°C.

Average LOW temperature: 10.2 °C.

The HIGHEST recorded temperature: 45.2°C.

The LOWEST recorded temperature: -6.7°C.

Winds are predominately from the west; south-west and north-west.

The local area is subject to regular storm events, especially in the hotter summer months. These storms are generally associated with strong winds and heavy rain for relatively short periods of time.

The local area has a history of major rain, hail and dust storms.



## Land Use

Land Type	Size (ha)
Conservation and natural environments	29,928
Production from relatively natural environments	48,740
Production from dryland agriculture and plantations	230,272
Production from irrigated agriculture and plantations	4,884
Intensive uses	24,339
Water	4,403
<b>TOTAL</b>	<b>342,566</b>

Source: ABS 2015 -2008 figures

Land use zone/type/classification	Area (Hectares)	% of LGA
<b>Business Zones</b>	<b>299.55</b>	<b>0.0875</b>
<i>B1 Neighbourhood Centres</i>	4.95	0.0014
<i>B2 Local Centres</i>	6.88	0.002
<i>B3 Commercial Core</i>	71.29	0.0208
<i>B4 Mixed Use</i>	35.91	0.0105
<i>B5 Business Development</i>	61.22	0.0179
<i>B6 Enterprise Corridors</i>	37.67	0.0110
<i>B7 Business Parks</i>	81.63	0.0238
<b>Environment Protection Zones</b>	<b>51,217.3</b>	<b>14.9617</b>
<i>E1 National Parks and Nature Reserves</i>	50,576.83	14.7746
<i>E3 Environmental Management</i>	640.47	0.0187
<b>Industrial Zones</b>	<b>2,072.88</b>	<b>0.6055</b>
<i>IN2 Light Industrial</i>	736.46	0.215
<i>IN3 Heavy Industrial</i>	1,336.42	0.39
<b>Residential Zones</b>	<b>17,427.52</b>	<b>5.091</b>
<i>R1 General Residential</i>	252.98	0.074
<i>R2 Low Density Residential</i>	2,863.31	0.836
<i>R5 Large Lot Residential</i>	14,311.22	4.18
<b>Recreation Zones</b>	<b>1,201.33</b>	<b>0.3509</b>
<i>RE1 Public Recreation</i>	834.02	0.2436
<i>RE2 Private Recreation</i>	367.30	0.1073
<b>Rural Zones</b>	<b>264,945.2</b>	<b>77.3963</b>
<i>RU1 Primary Production</i>	246,031.28	71.8711
<i>RU2 Rural Landscape</i>	12,828.50	3.7475
<i>RU3 Forestry</i>	409.61	0.1197
<i>RU4 Primary Production Small Lots</i>	5,426.59	1.5852
<i>RU5 Villages</i>	249.23	0.0728
<b>Special Purpose Zones</b>	<b>4,000.82</b>	<b>1.1687</b>
<i>SP2 Infrastructure</i>	2,766.91	0.8083
<i>SP3 Tourist</i>	1,233.91	0.3605
<b>Waterway Zones</b>	<b>1,158.3</b>	<b>0.3384</b>
<i>W2 Recreational Waterways</i>	1,158.3	0.3384
<b>Total</b>	<b>342,322.89</b>	<b>100</b>



## Population and People

Population for the local government area was: 69,414 people.

Males: 34,198/Females: 35,213

[Source: ABS 2016 Census]

Community Name	Population/Profile Information
<p><b>Dubbo</b> urban area can be subdivided into distinct geographical zones of:</p> <ul style="list-style-type: none"> <li>• North</li> <li>• South</li> <li>• East</li> <li>• West</li> </ul>	<p>The population of the Dubbo urban area is approximately 39,000. Dubbo is the hub for regional business/commercial activities and 'gateway' to Western NSW. Tourists and visitors substantially inflate the population figure.</p> <p>The Taronga Western Plains Zoo is located just south of Dubbo. The Zoo is a major national and state tourist attraction and can attract up to 5,000 visitors a day (peak periods), and as little as 100 in the hot summer months. Dubbo City is surrounded by rural/semi-rural subdivisions comprising of large residential blocks of land and/or small 'hobby-farm' holdings.</p>
<b>Wongarbon</b>	<p>The village population is approximately <b>660</b>. Area population: 770</p> <p>The village provides an alternate urban lifestyle still relying on Dubbo for services. It is located on the Mitchell Highway and Dubbo - Wellington rail line approximately 18 km south-east of Dubbo.</p>
<b>Brocklehurst</b>	<p>The village population is approximately <b>310</b>. Area Population: 474</p> <p>The village is a satellite of Dubbo with its own industries. It is located on the Newell Highway and Dubbo/Coonamble rail line immediately north from Dubbo.</p>
<b>Eumungerie</b>	<p>The village population is approximately <b>105</b>. The area (Eumungerie and Mogriguy) population: 425</p> <p>The village services the local farming community. It is located on the Newell Highway and Dubbo/Coonamble rail line approximately 32 km north of Dubbo.</p>
<b>Mogriguy</b>	<p>The village population is approximately <b>40</b>. The village is a rural settlement located on the Dubbo/Coonamble rail line approximately 20 km north of Dubbo.</p>
<b>Ballimore</b>	<p>The population of approximately <b>200</b>. The village is based on farming and located on the Golden Highway and Dubbo/Merrygoen rail line approximately 27 km east of Dubbo.</p>
<b>Cornerstone Community</b>	<p>The population of approximately <b>60</b> (up to 90 during school hours). The Community consists of residential houses and a school. Located on rural areas near junction of Mitchell Highway and Bunglegumbie Road, Burrabadine. Approximately 12 km west of Dubbo.</p>

### POPULATION INCREASE - LGA

Dubbo is a growth area. The current projected to have an annual growth rate of 2 to 3% per year. This growth is generally at the demise of small rural communities in the far-west and western areas of NSW who are experiencing the effects of 'rural decline'.

Year	Population
1971	20,629
1998	36,940
2004	39,077
2012	40,595
2015	41,573
2019	53,240

**Note:** Population has doubled in size over past 40 plus years.

In addition to normal population Dubbo attracts a large number of tourists and visitors (retail shoppers, medical appointments, contractors and business persons) to the City:

Visitors	Year ending March 2019	Average per Month	Average per Day
Domestic day trips	622	51.83	1.7
Domestic overnight trips	671	55.91	1.8
International	12	1	0.3
<b>TOTAL</b>	<b>1,304</b>		

Dubbo Regional Council 2019 report:

754,000 annual overnight visitors and 677,000 annual day visitors.

Note: On any given day there may be approximately 3,000 persons from outside the area visiting or staying within the City. The peak visitor periods are the school holiday periods and Easter. Business based visitation diminishes over the Christmas/New Year period. The end of December and early January is the quietest period for visitors.

#### **KEY POPULATION INFORMATION** (percent of population):

- Aboriginal: 15.07%.
- Australian Citizenship: 86.94%
- Born overseas: 15.8%
- Language other than English spoken at home: 12.8%.
- Unemployment rate: 2.0%
- Main industry is construction (16%), retail trade (13.3%) and education and training (9.6%).
- Internet access: 73.4% of occupied private dwellings have internet.

[Source: ABS 2016 Census]



**2016 Census**

People	69,414
Male	49.3%
Female	50.7%
Median age	40

Families	15,577
Average children per family for families within children	1.9
For all families	0.7

All private dwellings	30,194
Average people per household	2.5
Median weekly household income	\$1,176
Median monthly mortgage repayments	\$1,365
Median weekly rent	\$220
Average motor vehicle per dwelling	1.9

**People - demographics and education**

*(people tables are based on a person's place of usual residence on Census night)*

<b>Age in years</b>	<b>Percentage %</b>
0-4	6.8
5-9	7.2
10-14	6.4
15-19	6.0
20-24	5.8
25-29	6.2
30-34	6.0
35-39	5.5
40-49	6.2
50-54	6.2
55-59	6.6
60-64	6.9
65-69	5.7
70-74	4.5
75-79	3.6



Age in years	Percentage %
80-84	2.4
80 and over	2.4

**Registered marital status** (*people aged 15 years and over*)

Status	Percentage %
Married	46.8
Separated	3.8
Divorced	8.7
Widowed	6.7
Never married	33.9

**Social marital status**

(*people aged 15 years and over*)

Status	Percentage %
Registered marriage	47.3
De factor marriage	10.9
Not married	41.7

**Education**

Classification	Percentage %
Preschool	6.6
Primary - Government	16.8
Primary - Catholic	8.1
Primary - other non-Government	3.0
Secondary - Government	12.2
Secondary - Catholic	4.6
Secondary - other non-Government	2.6
Technical or further education institution	6.6
University or tertiary institution	5.7
Other	1.3
Not stated	32.4

**Level of highest educational attainment***(people aged 15 years and over)*

<b>Classification</b>	<b>Percentage %</b>
Bachelor degree level and above	12.4
Advanced Diploma and Diploma level	6.8
Certificate level IV	3.6
Certificate level III	15.5
Year 12	11.0
Year 11	4.0
Year 10	17.0
Certificate level II	0.1
Certificate level I	0.0
Year 9 or below	11.7
No educational attainment	0.3
Not stated	14.7

**People - cultural and language diversity***(ancestry, top responses)*

<b>Ancestry</b>	<b>Percentage %</b>
Australian	36.3
English	29.1
Irish	8.8
Scottish	6.9
German	2.6

**Country of birth**

<b>Country</b>	<b>Percentage %</b>
Australia	84.2
England	1.1
New Zealand	0.7
India	0.6
Philippines	0.4
Nepal	0.3



**Religious affiliation, top responses**

Religion	Percentage %
Catholic	27.7
Anglican	24.7
No religion, so described	19.7
Not stated	11.0
Uniting Church	5.4

**Language, top responses***(other than English)*

Language	Percentage %
Nepali	0.3
Mandarin	0.2
Malayalam	0.2
Tagalog	0.2
Cantonese	0.2

**People - employment**

Employment	Percentage %
Worked full-time	61.0
Worked part-time	27.5
Away from work	5.3
Unemployed	6.2

**Employment - hours worked***(people who reported being in the labour force, aged 15 years and over)*

Hours worked	Percentage %
1-15 hours per week	9.9
16-24 hours per week	8.6
25-34 hours per week	10.8
35-39 hours per week	20.2
40 hours or more per week	44.8

**Occupation***(employed people aged 15 years and over)*

<b>Occupation</b>	<b>Percentage %</b>
Professionals	16.5
Managers	16.2
Technicians and trade workers	13.7
Community and personal service workers	12.3
Clerical and administrative workers	11.9
Labourers	11.5
Sales workers	9.7
Machinery operators and drivers	6.5

**Industry of employment, top responses***(employed people aged 15 years and over)*

<b>Industry</b>	<b>Percentage %</b>
Hospitals (except psychiatric hospitals)	4.2
Primary education	2.9
Local government administration	2.5
Supermarket and grocery stores	2.4
Other social assistance services	2.3

**Median Weekly Incomes***(people aged 15 years and over)*

<b>Type</b>	<b>Amount \$</b>
Personal	617
Family	1,429
Household	1.176



**Travel to work, top responses***(employed people aged 15 years and over)*

Type	Percentage %
Car, as driver	68.5
Worked at home	6.8
Car, as passenger	5.7
Walked only	4.2
Truck	1.5
People who travelled to work by public transport	0.6
People who travelled to work by car as driver or passenger	74.9

**Unpaid Work***(people aged 15 years and over)*

Type	Percentage %
Did unpaid domestic work (last week)	66.4
Cared for child/children (last two weeks)	27.3
Provided unpaid assistance to a person with a disability (last two weeks)	12.1
Did voluntary work through an organisation or group (last 12 months)	21.9

**Unpaid domestic work, number of hours***(people aged 15 years and over)*

Hours	Percentage %
Less than five hours per week	18.7
5 to 14 hours per week	25.1
15 to 29 hours per week	12.3
30 hours or more per week	10.4

**Families - family composition**

Composition	Percentage %
Couple family without children	40.5
Couple family with children	38.5
One parent family	19.2
Other family	1.8

**Single (or lone) parents**

Gender	Percentage %
Male	18.3
Female	81.7

**Families - employment status of couple families***(labour force, parents or parents aged 15 years and over)*

Status	Percentage %
Both employed, worked full-time	26.0
Both employed, worked part-time	3.7
One employed full-time, on part-time	21.3
One employed full-time, other not working	11.5
One employed part-time, other not working	5.1
Both not working	19.8
Other (includes away from work)	5.4
Labour force status not stated (by one or both parents in a couple family)	7.2

**Dwellings - dwelling structure***Dwelling tables exclude visitor only and other non-classifiable households*

Dwelling Count	Percentage %
Occupied private dwellings	88.0
Unoccupied private dwellings	12.0

**Dwelling structure***(occupied private dwellings)*

Type	Percentage %
Separate house	87.4
Semi-detached, row or terrace house, townhouse etc	4.6
Flat or apartment	5.7
Other dwelling	1.6



**Number of bedrooms***(occupied private dwellings)*

<b>Number of bedrooms</b>	<b>Percentage %</b>
None (includes bedsitters)	0.4
1 bedroom	3.2
2 bedrooms	15.3
3 bedrooms	40.1
4 or more bedrooms	38.2
Number of bedrooms not stated	2.8
Average number of bedrooms per dwelling	-
Average number of people per household	-

**Tenure***(occupied private dwellings)*

<b>Tenure</b>	<b>Percentage %</b>
Owned outright	34.7
Owned with a mortgage	31.3
Rented	29.6
Other tenure type	1.2
Tenure type not stated	3.1

**Dwellings - household composition**

<b>Type</b>	<b>Percentage %</b>
Family households	69.8
Single (or lone) person household	27.4
Group households	2.8

**Household income**

<b>Type</b>	<b>Percentage %</b>
Less than \$650 gross weekly income	24.3
More than \$3000 gross weekly income	9.7

**Dwellings - mortgage and rent**

*Proportions are calculated using all tenure types for occupied private dwellings. This excludes visitor only and other non-classifiable households.*

<b>Rent weekly payments</b>	<b>Percentage %</b>
Median rent	-
Households where rent payments are less than 30% of household income	91.0
Households with rent payments greater than or equal to 30% of household income	9.0

<b>Mortgage monthly repayments</b>	<b>Percentage %</b>
Median mortgage repayments	-
Households where mortgage repayments are less than 30% of household income	95.3
Households with mortgage repayments greater than or equal to 30% of household income	4.7

**Dwellings - number of motor vehicles**

<b>Number of registered motor vehicles</b>	<b>Percentage %</b>
None	6.4
1 motor vehicle	32.9
2 motor vehicles	35.6
3 or more motor vehicles	20.5
Number of motor vehicles not stated	4.6

**Dwellings - internet connection**

<b>Status</b>	<b>Percentage %</b>
Internet not accessed from dwelling	23.5
Internet accessed from dwelling	73.4
Not stated	3.1

**People characteristics - Aboriginal and/or Torres Strait Islander peoples**

*(count based on place of usual residence on Census night)*

<b>People characteristics</b>	<b>Percentage %</b>
Male	50.1
Female	49.9
Median age	-



## **Social**

Dubbo has a wide socio-economic mix that is continually growing.

Dubbo is recognised as a regional support centre and business/manufacturing base for the agricultural and mining sectors.

The social structure is made up of established European and Aboriginal families complemented by a steady influx of out-of-area tradesman/contractors and employees.

The opening-up of nearby mining operations has resulted in an increase of tradesman and contractors residing in Dubbo, both temporary and permanently.

Many persons that have previously resided in communities in Western NSW and/or on rural properties within adjoining LGAs are moving to live in Dubbo on their retirement.

There are an above average number of welfare dependent individuals residing in the local area.

Socio-economically dependent residents and elderly people are mainly in the many public housing residential properties located in Dubbo.

In several areas within Dubbo these public housing properties are densely located in the same physical locations. This high concentration of public housing has been a contributing factor to cases of social unrest and increased crime rates.

Many people, of a more affluent socio-economic nature, reside in the numerous rural residential estates that surround Dubbo. These holdings are largely 25 acre/10 hectare holdings.

Criminal activity is of concern. Police deal with mainly socio-economic and drug related issues. Dubbo ranks within the top 10 local government areas in NSW for crime.

Dubbo has a previous history of civil unrest and mob-related crowd disturbances, especially within the socio economically depressed sections and public housing estate areas of the community.

Dubbo is a regional service centre accommodating a range of education, sport and recreation, healthcare, childcare, aged and disability care and youth facilities.

Many elderly people reside in the numerous aged care and nursing homes located within Dubbo.

The most common languages other than English spoken at home were: Arabic; Cantonese; Italian; Greek; and Tamil.

## **Aboriginal Community**

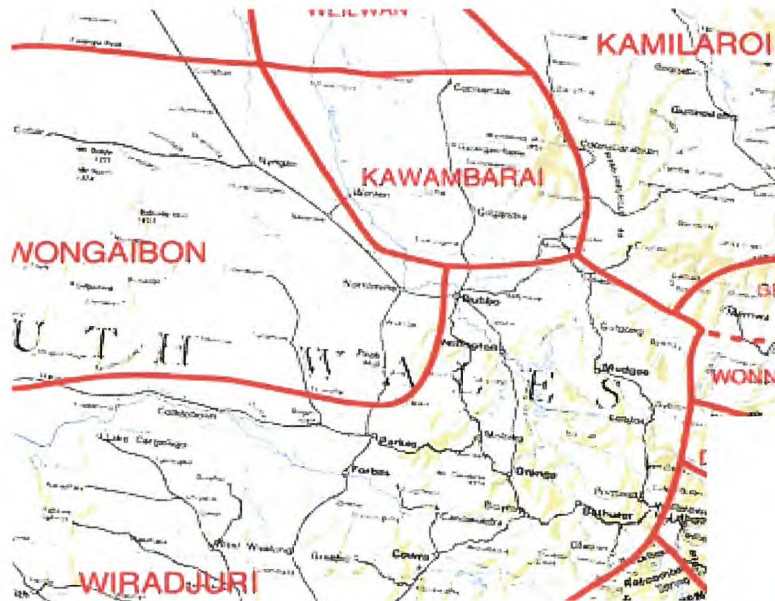
White settlement in the area has been established since the 1840s.

The area has a large number of people identified of Aboriginal background and culture.

With 15.1% of the population recognised as being Aboriginal this represents approximately 10,493 persons.

Aboriginal groups represented included descendants from the original tribal groups identified in the area and other Aboriginal groups that have settled in Dubbo from other traditional areas including Walgett, Brewarrina and Bourke.

The original tribal groups were primarily the Wiradjuri at Dubbo bordering with the Kawambarai at Gilgandra to the north and the Wongarbron at Narromine to the west.



Aboriginal people have a transient nature and culture.

At any given time there are a large number of Aboriginal persons moving through Dubbo visiting friends and relatives, both in the local areas and further afield. This movement results in a larger number of Aboriginal people being located within Dubbo than what official figures indicate.

There are a large number of Aboriginal based agencies within the LGA, with the main agencies being associated with housing and health.

Note: These agencies will need to be engaged, and will play a major role in emergency management recovery operations.

**Volunteer Culture**

A general satisfaction within the community with agency representation and activity. Well-resourced and supported volunteer organisations, including emergency services.

**Education**

There are a myriad of educational facilities available in Dubbo, from pre-schools to a campus of Charles Sturt University.

Dubbo is serviced by high schools, primary schools (both public and private); and the Dubbo School of Distance Education.

Note: All facilities are listed in 'Vulnerable Community' section on EMPLAN.



## Religion

Christian (Anglican and Catholic) beliefs predominate.

### Religions - ranked by size Dubbo (Census 2016)

Religion	Number	% of population
Western (Roman) Catholic	19,227	27.7
Anglican	17,137	24.7
Uniting Church	3,726	5.4
No religion, so described	12,392	17.9

This figure excludes not stated responses.

[Source: 2016 ABS Statistics]

Note: There is a mosque located in South Dubbo.

## Government Structures

Dubbo is a regional centre for a vast number of State Government and Commonwealth Government agencies.

Dubbo and the Dubbo LGA is located in the Federal Government Electorate of Parkes. The Parkes Electorate Office is located in Dubbo.

Dubbo and the Dubbo LGA is located in the NSW State Government Electorate of Dubbo. The Dubbo Electorate Office is located in Dubbo.

Dubbo is the administrative centre for the Local Government Authority of Dubbo Regional Council.

## Attitudes to Risks and Hazards

The community is generally responsive, conscious and cooperative with known hazards, especially floods and bushfires.

Emergency service/combating agency based community education and risk awareness programs are required as Dubbo continues to regularly attract new residents and visitors.

## Transport Routes and Facilities

### Utilities

Dubbo is fully serviced with reticulated water, sewerage, electricity and natural gas.

Village profiles:

Village	Water (reticulated)	Sewerage	Electricity (grid supply)	Natural gas
Brocklehurst	Yes	Yes	Yes	No
Wongarbon	Yes	Yes	Yes	No
Ballimore	Yes	No	Yes	No
Eumungerie	Yes	No	Yes	No
Mogriguy	Yes	No	Yes	No



## Communication networks

Dubbo is serviced with a landline telephone network and varied mobile telephone and data services over the urban areas and major road transport routes.

A Globalstar satellite earth station, used to track satellites for 'satellite' mobile phone communications is based at Brocklehurst, just north of Dubbo.

## Airport

Dubbo City Regional Airport is the busiest in the region.

The Airport services licensed regular passenger aircraft, light aircraft (private and charter), helicopters, military aircraft (training operations or re-fuelling at Airport), flying schools, Royal Flying Doctor Service, Air Ambulance and contracted medical patient transport.

NSW Rural Fire Service contracted fire-fighting aircraft are regularly pre-positioned on stand-by for quick deployment operational duty or when operational for water supply re-filling or fuel re-filling during the designated Bushfire Season.

Regular passenger aircraft operating at the airport are:

Airline	Aircraft	Dubbo departures	Dubbo arrivals	Total flights	Total seats	Total seats for airlines/ week
Qantas	Q200 - 36 Seats	2	2	4	144	3460
	Q300 - 50 Seats	8	8	16	800	
	Q400 - 74 Seats	17	17	34	2516	
Regional Express	SAAB 340B - 34 Seats	36	36	72	2448	2448
Fly Pelican	Jet 32 - 19 Seats	5	5	10	190	190
Fly Corporate	SAAB 340 (B) - 34 Seats	7	7	14	476	476
Airlink (commencing November 2019)	Piper Chieftain - 8 Seats	6	6	12	96	96
TOTALS		81	81	162	6670	6670

## Destination flight to and from (return for all flights)

- Dubbo to Sydney
- Dubbo to Melbourne
- Dubbo to Brisbane
- Dubbo to Newcastle
- Dubbo to Broken Hill
- Dubbo to Cobar
- Dubbo to Bourke
- Dubbo to Walgett/Lightening Ridge

## Passenger numbers for 2018

- July 2017 to June 2018 - 209,716
- July 2018 to June 2019 - 198,399
- January 2018 to December 2018 - 203,897

#### **Bulk quantities for fuel stored (Jet A1 and Avgas)**

- Avgas
- Jet a1
- Unleaded fuel (small storage in hanger Thomas Aviation)

The Royal Flying Doctor Service (RFDS) has a Base located at the Airport. The RFDS and NSW Ambulance (Air Ambulance) movements for 2018 where:

- Air Ambulance Emergency Contract = 1,083 fits (24/7 coverage 365 days a year).
- NSW Health Non-emergency Contract (inter hospital transfer - 519 fits (0600 - 0000 seven days a week, 365 days a year).
- RFDS delivered primary health care to remote clinics (dental services, mental health services etc) = 312 fits (week days, 11.5 months of the year).

A mid-air emergency in the nearby air traffic corridors used by interstate aircraft could lead to larger aircraft making a forced landing at Dubbo.

The Airport has a history of smaller privately owned and charter aircraft diverting to Dubbo in response to mid-air emergency, or alert incidents, within in-flight aircraft.

Aviation fuel is stored in bulk quantities at the Airport.

Jet A1: 90,000 litres

Avgas: 110,000 litres

The Airport has a large movement of private and public charter flights. Many of these flights service the centres of Nyngan, Cobar, Bourke, Coonamble, Walgett and Lightning Ridge.

#### **Rail Lines**

Four active rail lines converge on Dubbo.

The main rail line is the Sydney to Dubbo line that services both passenger and freight trains.

This line travels through Lithgow, Bathurst, Orange, Wellington and Dubbo.

Other lines that converge on Dubbo are:

- East - Dubbo to Merrygoen where the line branches in two directions:
  - Through to Werris Creek (line branches in two directions to Tamworth and Moree).
  - Through to Newcastle (Dunedoo, Gulgong, Ulan, Muswellbrook and Newcastle).
- North - Dubbo to Coonamble
- West - Dubbo to Narromine where the line branches in two directions:
  - Through to Cobar (Narromine, Trangie, Nyngan and Cobar).
  - Through to Parkes.



- Parkes - the rail line at branches in two directions:
  - West - on route to Broken Hill and on into South Australia and Western Australia.
  - South - on route to Melbourne, Victoria and Sydney, NSW.

Dubbo is therefore a key location in the NSW and National Rail System. Regular movements of 'Super Freighter Trains' move from the local area on this rail network.

These trains transport mixed loads that include substantial quantities of hazardous materials. The main ones being acids and cyanide products that are used in interstate, regional and local mining operations.

All lines have regular movements of trains transporting grain, mainly wheat. The line through to Cobar has regular movements of mining ore products.

The Dubbo to Sydney line serves the daily XPT passenger service (up to 386 passengers) to and from Sydney. The XPT train terminates at Dubbo. Passengers then use coaches to travel through to centres located along the routes:

- Dubbo to Broken Hill
- Dubbo to Bourke
- Dubbo to Brewarrina
- Dubbo to Lightning Ridge.

Bulk grain storage handling facilities are located along the rail lines. The vast majority are at localities that are no longer active. Grain is generally transported longer distances by road transport to larger centres for storage and eventually moved by train from these larger centres.

The Dubbo Rail Yards have recently moved from the CBD area (Dubbo Rail Station) to a new privately owned facility at Troy (Fletcher Grain Intermodal Centre). This facility is located in Yarrandale Road on the Dubbo to Merrygoen rail line and is 700 m from Fletcher International Exports' abattoir. This facility is a major transport hub/storage centre. Major items unloaded/loaded at the facility are:

- Grain.
- Refrigerated meat products.
- Dangerous goods/chemicals (used in agriculture and mining operations).

Hazards and risks associated with train operations include:

- Derailments at high speeds.
- Collisions at level crossings.
- Hazardous materials bulk spills, fires or explosions.

Train lines and associated train control in the area are managed by two NSW government contracted operators:

- John Holland Rail (Country Rail Network (CRN)).
- Australian Rail Track Corporation (ARTC Leased Network).

These operators have contractual responsibility to Transport for NSW for the maintenance of their respective rail lines.



Both operators have Train Control Centres located at Newcastle.

ARTC: Broadmeadow  
John Holland Rail: Mayfield

Both Train Control Centres have direct radio communications with all train drivers operating trains within the local area.

## **Roads**

Dubbo is the centre of intersecting highways.

Each major road travelling north, east, south and west of Dubbo is a highway.

Dubbo's motto is 'Hub of the West'.

The Golden Highway to Newcastle and the Hunter Region commences in Dubbo.

The Mitchell and Newell highways intersect at Dubbo, with these highways being the principal road links to the region and major interstate links between Victoria, South Australia, Queensland and NSW.

Dubbo has an inland container terminal and is located on the:

- Sydney to Darwin.
- Brisbane to Melbourne.
- Sydney to Adelaide/Perth transport corridors.

Dubbo is the eastern termination centre for heavy transport vehicles 'Road Trains'.

These vehicles, along with B-doubles provide efficient transport throughout the region and interstate.

## **RMS Traffic Count Figures - 2018 (daily average traffic movements)**

### **Newell Highway (at Dubbo)**

Average daily traffic is 21,500 vehicle movements (heavy vehicles, cars/light vehicles and cars/light vehicles towing).

## **Bridges**

The area has identified key bridges that cross both the Macquarie and Talbragar rivers.

These being:

Macquarie River Bridges:

- Emile Serisier Bridge (low level bridge) located on the Newell Highway near the CBD.
- LH Ford Bridge (high level bridge) located on the Mitchell Highway in the CBD.
- Troy Bridge (low level bridge) located off the Newell Highway between Dubbo and Brocklehurst.
- Dubbo Rail Bridge (high level bridge) located on the Dubbo to Narromine rail line in the CBD.

Talbragar River Bridges:

- Talbragar River Bridge (high level bridge) located on the Newell Highway between Dubbo and Brocklehurst.
- Gulambula Bridge (see over).

**Bridge Profiles**

Emile Serisier Bridge:

- Subject to flooding and is covered with water and closed in significant flood events.
- Dual lane both directions traffic flow (four lanes in total).
- Concrete constructed bridge.

LH Ford Bridge:

- Constructed above known flood heights, and not subject to flooding.
- Subject of structural monitoring by the Roads and Maritime Services.
- Single lane both direction traffic flow (two lanes in total).
- Concrete constructed Bridge.

Troy Bridge:

- Subject to flooding and is covered with water and closed in significant flood events.
- Single lane both direction traffic flow (two lanes in total).
- Concrete constructed bridge.

Dubbo Rail Bridge:

- Constructed above known flood heights, and not subject to flooding.
- Single line.
- Wrought iron constructed bridge built in 1881.

Talbragar River Highway Bridge:

- Constructed above known flood heights, and not subject to flooding.
- Single lane both direction traffic flow (two lanes in total).
- Concrete constructed bridge.



LH Ford Bridge

Constructional issues associated with the LH Ford Bridge - monitored by Roads and Maritime Services (RMS).





Emile Serisier Bridge



Dubbo Rail Bridge (Wrought Iron)

In the 1955 Flood (flood of record for Dubbo) the Dubbo Rail Bridge was used to provide a transport link between the CBD area and West Dubbo.

Such action would be relative today if all Macquarie River road bridges become unusable.

Other significant bridges that cater for local rural based traffic are:

Gulambula Bridge:

- Crosses the Talbragar River on the Old Mendooran Road. Bridge located upstream and east of Dubbo, off the Golden Highway.
- Concrete constructed bridge built in 2015. Built to clear 1:20 year flood.



Rawsonville Bridge:

- Crosses the Macquarie River as is located downstream and west of Dubbo, off the Mitchell Highway.

Bill Mills Bridge - Ballimore:

- On Goan Creek Road, off Golden Highway. Crosses the Talbragar River.
- Concrete bridge constructed in 2002. Subject to flooding impacts.

Footbridges over Macquarie River at Dubbo:

- Yabang Gee Bridge, off Tamworth Street, Dubbo (South Dubbo).
- Shibble Bridge, off Macquarie Street, Dubbo (South Dubbo).
- Both bridges are part of the Tracker Riley Cycleway, used for bike and pedestrian traffic.
- Concrete bridges with collapsible hand rails (Yabang Gee - manual; Shibble - stress collapse).
- Both bridges are subject to closure during 'Nuisance Flooding' events in excess of the 2.5 m to 4.0 m flood height range (relative the Dubbo flood gauge).

## Community Assets

### Buildings

Community halls are available at the urban centres of Dubbo and villages.

Dubbo has a number of sport and recreational open spaces with basic facilities throughout the City.

These facilities, combined with several large size registered licensed clubs, showground facility, government owned schools adequately equip the City for emergency evacuation operations for both the LGA and regional areas.

There are a considerable number of heritage listed buildings in the Dubbo area.

### Taronga Western Plains Zoo

This Zoo is located on the southern edge of Dubbo.

This facility is the major local and regional tourist attraction and its animal breeding programs have international significance.

Zoo visitor numbers:

- In 2018 our total visitors was 256,338.

Average number of guests that 'sleep-over' in the onsite accommodation per night:

- In 2018 the total overnight visitors was 32,662.

Number of employees at the Zoo:

- 121 full time
- 181 part time
- 106 volunteers

## Economy and Industry

The local area economic base is generally stable and productive based on agriculture, mining, tourism and government agency and private commercial services.

The agriculture and mining industries can be subjected to climate and external national and world trade variations. In particular, drought or low commodity prices.

The broad base of the Dubbo economy gives it significant resilience against economic shocks.

### **Labour Force**

Employed: 31,626

Unemployed: 1,961

Unemployment Rate: 6.2%

*[Source: ABS 2016 Census]*

The main employing industry is health care and social assistance. This industry employs 4.2% of the working population.

### **Employment by Industry**

The biggest employment industries by percentage of population are:

- |    |                                         |      |
|----|-----------------------------------------|------|
| 1. | Hospitals(except psychiatric hospitals) | 4.2% |
| 2. | Primary education                       | 2.9% |
| 3. | Local Government Administration         | 2.5% |
| 4. | Supermarket and Grocery Stores          | 2.4% |
| 5. | Other social Assistance Services        | 2.3% |

*[Source: ABS 2016 Census]*

### **Median Weekly Personal Income**

\$617 per week

*[Source: ABS 2016 Census]*

### **Average Value of Private Sector Houses Being Constructed**

\$337,000

*[Source: Dubbo Regional Council]*

### **Agriculture**

Agricultural production in Dubbo itself is modest; however, it is the regional centre for the servicing of this industry, which is concentrated on broad-acre cereal, cotton and livestock production.

Numerous business activities associated with stockfeed, fuel and chemical distribution and animal transport carriers.



## Manufacturing and Processing

Major facilities and employers being:

- Fletcher's Abattoir (the largest private employer in Dubbo with up to 700 employees, dependent upon seasonal stock supplies); and
- Furney's Flour Mill (facility located in the CBD area of Dubbo).

Supplementing these are building construction and earth moving firms, heavy and light engineering, equipment/facilities manufacturers and heavy/light vehicle automotive services.

## Bulk Storages

Dubbo is the hub for major storages of many hazardous materials (HAZMAT).

Main products are:

- Bulk fuel storages (diesel, petrol, LPG and aviation fuel).
- Farm chemicals (pesticides and weedicides).
- Sodium Cyanide and Hydrogen Peroxide (used in mining operations in mines located to the west and south of Dubbo).
- Ammonium Nitrate (used as a fertiliser in the agriculture industry).

The main storage facilities are:

- Toll Mining Services - 5L Boothenba Road, Dubbo (chemicals/HAZMAT); and
- Fuel depots (Inland Petroleum and Lowes Petroleum) Erskine Street, Dubbo.

The fuel depots in North Dubbo, along Erskine Street, are located in close proximity to the centre of CBD area; licensed clubs; hotels; TAFE College; child care facilities; Railway Station; Swimming and Aquatics Centre; sporting fields; park and garden areas; public schools; Dubbo Base Hospital; businesses and residential areas.

An incident at any of the fuel depots, requiring fire-fighting and/or evacuation operations would have significant impact on the surrounding areas and involve a large number of evacuees.

[Refer Facility/s Profile on Page 55 and 56]

There is a large onsite storage of aviation fuel (200,000 litres) located at the Dubbo City Regional Airport, located on Cooreena Road, West Dubbo.

A wide range of chemicals are also stored at facilities within Dubbo that service the agriculture and mining industries.

Large quantities of pesticides/weedicides and Ammonia Nitrate are stored in numerous 'agriculture supply' businesses located within Dubbo. The vast majority of these businesses are located in North Dubbo in both Bourke Street (Newell Highway) and Erskine streets.

## Animal Facilities

Taronga Western Plains Zoo, Dubbo Regional Livestock Selling Centre and Fletcher's Abattoir have been identified as potential sites for an outbreak of exotic disease; and/or being impacted upon if an exotic disease outbreak was to occur within the State and Region.

Up to 40,000 sheep are processed on a weekly basis at Fletcher's Abattoir. The Abattoir employs on average 700 persons, but is subject to seasonal conditions and stock availability. The Abattoir is a major international exporter of meat products.



Large numbers of cattle (5,000 plus) and sheep (27,000 plus) are moved through the Dubbo Regional Livestock Selling Centre on a weekly basis. This is the biggest sales facility on sales volumes of sheep and cattle combined in Australia.

The value of stock sold through the Dubbo Regional Livestock Selling Centre has an annual value of approximately \$47 million.

Both the Abattoir and Selling Centre have large numbers of heavy vehicle road transport movements involved with the transportation of animals.

## **Retail**

Car Sales:

- Dubbo has an estimated 35 vehicle and 10 motor cycle retailing business outlets that service both new and second hand vehicles.
- The dealers stock and sell all major manufactures vehicles and have millions of dollars of stock in their car yards at any given time. Vast majority of these facilities include open spaces and vehicles exposed to prevailing weather conditions. This is of particular concern in storm events.

Shopping/Retail Complexes:

Dubbo City has several major shopping complexes.

These being:

- Orana Mall: Located at the intersection of Wheelers Lane and Mitchell Highway in East Dubbo. Orana Mall is the largest shopping complex in Dubbo. It is located adjacent to a Petrol Station Service Centre (BoGas) and has an onsite petrol/fuel station facility (Woolworths Fuel).
- Dubbo Square: Located in Macquarie Street in the southern end of the CBD area.
- Riverdale: Located in Macquarie Street in the northern end of the CBD area. The Riverdale complex also accommodates the Readings Cinema.
- Delroy Shopping Centre: Located on Minore Road in West Dubbo.

Community based shopping/retail centres are located at:

- West Dubbo - Victoria Street (Mitchell Highway).
- North Dubbo - Bourke Street (Newell Highway).
- East Dubbo - Myall Street.
- South Dubbo - Tamworth Street and Boundary Road.

Both the West Dubbo and North Dubbo community shopping areas have petrol/fuel station facility/s located adjacent to retail shops.

Evacuations of any complex or shopping centre would involve significant numbers of people.

All major shopping centres and community retail centres have nearby open recreation/sporting grounds that can be used for evacuation and emergency assembly point use.

## Tourism

Tourism brings in excess of \$186.796 million per year to Dubbo and attracts over one million visitors annually. It is a significant local industry that creates jobs, generates private and public sector investment, enhances local community facilities and provides a contribution and motivation to conserve our natural environment.

The major tourist destination is the world famous Taronga Western Plains Zoo. There can be up to 5,000 visitors a day at peak times (Easter).

### Number of Registered Businesses - 5,132

- Number of businesses that employ 1 to 19 employees: 1,919
- Number of businesses that employ 20 to 199 or greater employees: 129
- Number of businesses that are non-employing: 3,078
- Number of businesses that employ 200 plus employees: 6

### Number of Businesses by Industry

Industry	Number
Accommodation and food services	225
Administrative and support services	162
Agriculture, forestry and fishing	1,182
Arts and recreation services	51
Construction	906
Education and training	52
Electricity, gas, water and waste services	14
Financial and insurance services	314
Health care and social assistance	251
Information media and telecommunications	7
Manufacturing	155
Mining	9
Not classified	26
Other services	292
Professional scientific and technical services	317
Public administration and safety	13
Rental, hiring and real estate services	432
Retail trade	280
Transport, postal and warehousing	290
Wholesale trade	149
<b>TOTAL:</b>	<b>5,127</b>

### Risk Profiling for Villages and Zoo

Information based on ERM Report Community Consultation.

### Taronga Western Plains Zoo

History:

- The 2003 storm resulted in the gates being closed for the first time in 28 years. The Zoo was closed for three days during the peak tourist season.



- Fire has been identified as posing a risk to the Zoo. The Zoo has its own fire unit and is a member of Fire + Rescue NSW. The NSW RFS conduct a risk assessment annually. The Zoo has response and recovery plans in place.

Risks and comments:

- Dangerous animals escaping within/outside the confines of the Zoo.
- The priority is to evacuate people, not to stay and save animals.
- External fence is fox-proof only.
- The Zoo is a Quarantine Zone, risk of disease low and rigid procedures are in place.
- The Zoo has back-up generators.
- Onsite gas storage tanks (bullet tank and cylinders).
- Animals are penned at night, however early warning of impending storms is needed.
- The perimeter fence was breached in 2003 but no animal escapes resulted.
- Fire is possible and would have major consequences.
- Extreme heat is no particular problem.

## Wongarbron

History:

- There is no significant concern from disasters ('Disaster Free').
- The storm that passed from the Zoo through town, then on to Wongarbron in 2003, was a dry electrical storm that resulted in one house being evacuated and large ironbark trees blown down. This storm was regarded as a tornado with a 200 m wide path from Minore through the Zoo to Wongarbron.
- A 1 in 100 year local flood event from Eulomogo Creek has occurred previously, the most recent being December 2010 and September 1998. Causing some evacuation of houses.

Risks/Comments:

- The town is under the flight path for planes flying to Dubbo City Regional Airport.
- Semi-trailers take a short cut through Beni/Barbigal Road carrying unknown loads.
- Local flooding is common with 10 houses affected.
  - The local ground tank can be breached.
  - A flash flood could occur after 100 mm of rain over one hour.
  - RFS become wardens for the SES.
- Bushfire is unlikely, however some 20 houses may be affected.
  - The Wongarbron Dam reserve is subjected to fire, especially fires lit by juveniles.
  - Nearby Beni Forest may pose a fire threat.
  - A westerly wind fanning a fire from Goonoo/Beni would impact on the north-west of the Village and penetrate the built-up area.
  - The RFS is located at the Village.
- Chemical/gas storages include on farm diesel tanks and LPG at the school. A high-pressure natural gas line (Dubbo to Wellington line) runs past the village.
- A road/rail level crossing (Dubbo to Wellington line) nearby.
- It is a close knit social community providing good inter-communications. More, and younger, families relocated from Dubbo since the provision of reticulated water.

## Ballimore

### History:

- Ballimore is not exposed to significant events. Many minor floods have been recorded at the western end of the village.
- Hail from a severe storm in February 2004 resulted in nearly all the roofs being replaced. This was the same storm that affected Mudgee. Hailstones were cricket ball size and jagged. The event occurred mid-afternoon when school was in and two-thirds of the population were at work in Dubbo.

### Risks/Comments:

- Road accidents are the primary concern.
  - The cross roads at the Dunedoo Road (Golden Highway) and Ballimore Road and at the western end are identified as problem sites.
- Flooding has the second priority.
  - Talbragar River Flooding - Village flooded in the 1955 Floods.
  - The Zeeland Street culvert in the railway line causes local flooding. The railway embankment is high and flows are diverted to the creek.
- Bushfire causing minor residential damage is the third priority.

## Eumungerie and Mogriguy

### History:

- The 1993 flood backed up by the Main Road 572 (Cobboco Street) formation caused flooding higher than that experienced in 1955. Remedial works have since been undertaken.
- A hailstorm in 2004 affected Lincoln Forest, stripped trees, damaged two sheds and flattened the other side of Marthaguy Creek. The 2 km wide storm followed a variable route like a snake trail.

### Risks/Comments:

- Bushfire
  - Lincoln Forest is on the extremity of the village.
  - Coolbaggie Forest National Park could be a source of a major fire tunnel owing to regrowth of galvanised burr and black pine and rabbit reduction.
- Flood
  - Flash floods are over in a few hours.
- LPG is stored at the school.
- The Eumungerie School adjoins the railway line. This is not expected to be a problem as the rail line is only used for grain transport purposes.

## Brocklehurst

### History:

- Previous history of severe storms.

### Risks/Comments:

- The town is under the flight path for planes on take-off/landing at Dubbo City Regional Airport.
- Road transport accidents are primary concern.
  - Newell Highway intersection at Brocklehurst.
  - Bend in Dubbo to Mendooran Road in Brocklehurst.
  - The possibility of chemical and fuel spill contamination affecting houses from the table drain run-off at the eastern end at the Newell Highway intersection and discharging into Brocklehurst Lagoon.



- Not at risk from bush fires.
- Flooding only causes minor effect on one small area. Four houses may be affected during a 1955 type flood.
- Brocklehurst possibly at risk from various industry activities:
  - Quarry with explosives.
  - Pioneer bitumen plant.
  - Grain silo.
  - Intensive piggery.
  - Manufacturing industries.
  - Major hazardous facility at Boothenba Road, Troy (near Dubbo Regional Livestock Selling Centre).
- The GlobalStar satellite earth station (one of two sites in Australia) with six dishes is located in a property on the opposite side of the Newell Highway from Brocklehurst.

## Annexure B - Hazards and Risks Summary

## Risks and Ratings reviewed and determined by LEMC in 2015

Source of Risk	Risk Level	Combat Agency (Key Support Agency)
<b>FLOOD</b> ('Major to Max Probable')	<b>Extreme</b>	NSW SES
<b>BUSHFIRE</b> (Impinging on Dubbo rural residential estates south-west of Dubbo)	<b>Extreme</b>	NSW Rural Fire Service
<b>BUSHFIRE</b> (Impinging on Western Plains Zoo)	<b>Extreme</b>	NSW Rural Fire Service Taronga WP Zoo
<b>STORM</b>	<b>Extreme</b>	NSW SES
<b>TRANSPORT EMERGENCY - ROAD</b> (Passenger coach/bus)	<b>Extreme</b>	LEOCON
<b>HAZMAT</b> (Major storage facilities and transport routes)	<b>Extreme</b>	Fire + Rescue NSW
<b>AGRICULTURAL DISEASE - Animal</b> (Exotic stock/animal disease - Saleyards/Abattoir/Zoo)	<b>Extreme</b>	DPI Local Land Services
<b>UTILITIES FAILURE - Electricity</b> (Sub-stations/transmission lines)	<b>Extreme</b>	LEOCON Essential Energy
<b>PANDEMIC</b> (Human)	<b>Extreme</b>	Department of Health
<b>DAM FAILURE</b> (Burrendong Dam)	<b>High</b>	NSW SES (NSW Water)
<b>HEATWAVE</b> (Human)	<b>High</b>	Department of Health
<b>TRANSPORT EMERGENCY - RAIL</b> (Passenger train/XPT)	<b>High</b>	LEOCON John Holland Rail/ARTC
<b>TRANSPORT EMERGENCY - AIR</b> (Regular passenger aircraft)	<b>High</b>	LEOCON
<b>FIRE - COMMERCIAL/INDUSTRIAL</b> (Fuel depots/gas storage/MHF/flour mill/shopping centres)	<b>High</b>	Fire + Rescue NSW
<b>Utilities Failure - Telecommunication</b>	<b>Medium</b>	LEOCON
<b>Major Industrial Accident</b>	<b>Medium</b>	LEOCON
<b>Bridge Collapse</b>	<b>Medium</b>	LEOCON Dubbo Regional Council/RMS
<b>Building Collapse</b>	<b>Medium</b>	LEOCON
<b>Earthquake</b>	<b>Medium</b>	LEOCON



Source of Risk	Risk Level	Combat Agency (Key Support Agency)
Fire Residential	Low	Fire + Rescue NSW NSW Rural Fire Service
Fire - Commercial [Nursing home/aged care facility]	Low	Fire + Rescue NSW
Bomb - Threat/Scare	Low	LEOCON
Utilities Failure - Natural Gas	Low	LEOCON AGL/Jemma
Utilities Failure - Water	Low	LEOCON Dubbo Regional Council
Utilities Failure - Sewage	Low	LEOCON Dubbo Regional Council

A Local Emergency Risk Management (ERM) Study has been undertaken by the Dubbo Local Emergency Management Committee identifying the following hazards as having risk of causing loss of life, property, utilities, services and/or the community's ability to function within its normal capacity. These hazards have been identified as having the potential to create an emergency. The Emergency Risk Management Study should be referenced to identify the complete list of consequences and risk descriptions.

Hazard	Risk Description	Likelihood Rating	Consequence Rating	Risk Priority	Combat/Responsible Agency
Agricultural Disease (Animal)	An agriculture/horticulture incident that results, or has potential to result, in the spread of a communicable disease or infestation (Zoo, Abattoir and Livestock Marketing Centre).	Possible	Catastrophic	Extreme	Department of Primary Industries
Bridge Collapse	Failure of a major bridge structure with or without warning owing to structural failure or as a result of external/internal events or other hazards/incidents.	Unlikely	Moderate	Medium	LEOCON
Building Collapse	Collapse of building owing to structural failure or impact from external/internal event of other hazards/incidents.	Unlikely	Moderate	Medium	LEOCON FRNSW
Communicable Disease (Human)	Pandemic illness that affects, or has potential to affect, large portions of the human population	Possible	Major	Extreme	NSW Health
Dam Failure	A dam is compromised that results in localised or widespread flooding.	Rare	Catastrophic	High	State Water NSW NSW SES
Earthquake	Earthquake of significant strength that results in localised or widespread damage.	Unlikely	Moderate	Medium	LEOCON
Fire (Bush or Grass)	Major fires in areas of bush or grasslands impacting upon Taronga Western Plains Zoo or Residential Estates.	Possible	Catastrophic	Extreme	NSW RFS FRNSW
Fire (Industrial)	Serious industrial fire in office complexes and/or warehouses within industrial estates.	Possible	Major	High	FRNSW NSW RFS
Fire (Commercial)	Serious commercial fires in shopping centres, aged persons units, nursing homes and hospitals.	Possible	Major	High	FRNSW NSW RFS



Hazard	Risk Description	Likelihood Rating	Consequence Rating	Risk Priority	Combat/Responsible Agency
Fire (Residential)	Serious residential fire in medium/high rise apartments.	Unlikely	Minor	Low	FRNSW NSW RFS
Flood (Flash)	Heavy rainfall causes excessive localised flooding with minimal warning time <b>[Not relevant in local area]</b>	Rare	Minor	Low	NSW SES
Flood (Riverine)	River flows exceed the capacity of normal river systems resulting in flood waters escaping and inundating river plains	Likely	Catastrophic	Extreme	NSW SES
Hazardous Release	Hazardous material released as a result of an incident or accident at MHF.	Likely	Major	Extreme	FRNSW
Heatwave	A sequence of abnormally hot conditions having the potential to affect a community adversely.	Possible	Major	High	SEOCON
Landslip	Landslip/landslide resulting in localised or widespread damage. <b>(Not relevant in local area)</b>	Rare	Insignificant	Low	LEOCON
Storm	Severe storm with accompanying lightning, hail, wind, and/or rain that causes severe damage and/or localised flooding.(includes tornado)	Likely	Major	Extreme	NSW SES
Transport Emergency (Air)	Aircraft crashes in LGA resulting in large number of fatalities, injuries and/or damage to property.	Possible	Major	High	LEOCON
Transport Emergency (Road)	A major vehicle accident in the LGA resulting in large number of fatalities, injuries and/or damage to property.	Possible	Major	Extreme	LEOCON
Transport Emergency (Rail)	A major accident in the LGA resulting in large number of fatalities, injuries and/or damage to property, environmental damage and major recovery operation	Possible	Major	High	LEOCON Relevant Rail line contract: ARTC/John Holland Rail

Hazard	Risk Description	Likelihood Rating	Consequence Rating	Risk Priority	Combat/Responsible Agency
Utilities Failure - Natural Gas	Major failure of essential utility for unreasonable periods of time as a result of a natural or man-made occurrence.	Unlikely	Minor	Low	LEOCON (AGL/JEMENA/APA)
Utilities Failure - Telecommunications	Major failure of essential utility for unreasonable periods of time as a result of a natural or man-made occurrence.	Unlikely	Moderate	Medium	LEOCON
Utilities Failure - Electricity	Major failure of essential utility for unreasonable periods of time as a result of a natural or man-made occurrence.	Likely	Major	Extreme	LEOCON Essential Energy/ AusGrid
Utilities Failure - Water	Major failure of essential utility for unreasonable periods of time as a result of a natural or man-made occurrence.	Unlikely	Minor	Low	LEOCON Dubbo Regional Council
Utilities Failure - Sewerage	Major failure of essential utility for unreasonable periods of time as a result of a natural or man-made occurrence.	Unlikely	Minor	Low	LEOCON Dubbo Regional Council
Bomb - Threat/ Scare	A major incident resulting in large number of fatalities, injuries and/or evacuations, damage to property, environmental damage and major recovery operation	Unlikely	Minor	Low	LEOCON
Major Industrial Accident	A major accident in the LGA resulting in large number of fatalities, injuries and/or damage to property, environmental damage and major recovery operation.	Possible	Minor	Medium	LEOCON



## Annexure C - Local Sub Plans, Supporting Plans and Policies

Responsibility for the preparation and maintenance of appropriate sub and supporting plans rest with the relevant Combat Agency Controller or the relevant Functional Area Coordinator.

The sub/supporting plans are developed in consultation with the Dubbo LEMC and the community.

The plans listed below are supplementary to this EMPLAN. The sub/supporting plans have been endorsed by the LEMC and are determined as compliant and complimentary to the arrangements listed in this EMPLAN.

These plans are retained by the LEMO, on behalf of the LEMC, and public release versions are available on the Council Website: [www.dubbo.nsw.gov.au](http://www.dubbo.nsw.gov.au)

Plan/Policy	Purpose	Combat/Responsible Agency
<b>Orana Team - NSW Rural Fire Service: Risk Management Plan</b>	Bushfire Operations	NSW Rural Fire Service
<b>Dubbo Local Flood Plan</b>	Flood Operations	NSW State Emergency Service
<b>Dubbo City Regional Airport Emergency Plan</b>	Airport Emergency Operations	Dubbo Regional Council
<b>Taronga Western Plains Zoo Emergency Procedures Manual</b>	Emergency Operations/ Evacuation arrangements at Zoo	Taronga Western Plains Zoo
<b>Dubbo Flood Operations Manual</b>	Flood Operations	Dubbo Regional Council
<b>Dubbo Road Closure and Evacuation Sub Plan</b>	Road Closure/Traffic Management	Dubbo Regional Council

Some of the combat agencies and other members of the Dubbo LEMC maintain their own plans for emergency purposes. These plans are **NOT** maintained by LEMO and/or the LEMC. These plans can be accessed directly from agencies by the LEOCON and/or Incident Controllers if/when required. There are also State plans applicable to local area emergency operations.

Known supporting plans are listed below:

- Dubbo Local Flood Plan (SES)
- NSW State Animal Health Emergencies Plan
- Western NSW Local Health District Region Supporting Plan (NSW Health)
- Dubbo Base Hospital Disaster Plan (Western NSW Local Health District)
- NSW Drought Relief Manual (DPI)
- Livestock Flood Relief and Fodder Drop Manual (DPI)
- Plague Locust Control Plan (DPI)
- Welfare Services Functional Area Supporting Plan (FACS)
- Orana Mall Evacuation Management Plan (Centre Management)
- Fire + Rescue NSWs and NSW Rural Fire Service Mutual Aid Agreement
- NSW State Storm Plan (SES/SEMC)
- NSW State Recovery Plan (Ministry of Justice)
- ABC Local Radio Emergency Broadcasting Policy (ABC Radio)
- Central West Emergency Management Region EMPLAN (REMC)

## Part 3 - Restricted Operational Information

### Annexure D - Community Assets

#### Key Resources and Locations

##### Emergency Services:

The full range of emergency services is available in Dubbo City.  
These are:

- POLICE:  
Western Region Command and Orana Local Area Command
- FIRE + RESCUE NSW:  
Area, Zone Commands and Local Brigades
- NSW RURAL FIRE SERVICE:  
Orana Team and Local Brigades
- NSW AMBULANCE:  
Western Region and Local Ambulance Station
- NSW STATE EMERGENCY SERVICE:  
Macquarie Region and Local Unit
- NSW VOLUNTEER RESCUE ASSOCIATION:  
Dubbo Rescue Squad

Dubbo is also the hub for the Regional Emergency Management Functional Areas of:

- AGRICULTURE AND ANIMAL SERVICES:  
NSW Department of Primary Industries
- ENGINEERING SERVICES:  
NSW Public Works
- ENVIRONMENT SERVICES:  
Environment Protection Authority
- HEALTH SERVICES:  
Western NSW Local Health District
- WELFARE SERVICES:  
Family and Community Services

Other regional/state based emergency management functional areas are located at:

- COMMUNICATION SERVICES:  
State based. Located in Sydney



- PUBLIC INFORMATION SERVICES:  
State based. Located in Sydney
- TRANSPORT SERVICES:  
Region based. Located in Bathurst

The Royal Flying Doctor Service (RFDS) has an aircraft base at Dubbo City Regional Airport.

Dubbo Base Hospital is the major retrieval hospital for the Dubbo and surrounding region.

Medical retrievals are undertaken by:

- Rescue Helicopter: Main operational aircraft for the Dubbo area is based at Orange. Other aircraft are based at Tamworth, Newcastle, Canberra and Sydney.
- Air Ambulance. Aircraft are based in Sydney.
- Royal Flying Doctor Service. Aircraft based at Dubbo and Broken Hill.

All aero medical retrievals and deployment of aircraft are coordinated and managed by the NSW Ambulance - Aero Medical Unit based in Sydney.

The '000' Call Centres for the area are located in:

- POLICE: Tamworth
- FIRE: Newcastle
- AMBULANCE: Dubbo

All '000' Centres have back-up facilities for the area. These are based in Sydney.

## Emergency Operations Centre/s

### Local

Primary Facility:

Dubbo Local Emergency Operations Centre  
NSW Rural Fire Service - Orana Team HQ  
Judy Jakins Drive, Dubbo

Alternate Facility:

NSW State Emergency Service  
Dubbo Local Unit  
Judy Jakins Drive, Dubbo

### Region

Primary Facility:

Central West Emergency Management Region  
Region Emergency Operations Centre  
NSW Police Force - Western Region Operations Centre (ROC)  
Dubbo Police Station  
143 Brisbane Street, Dubbo

Alternate Facility:

Central West Emergency Management Region  
Region Emergency Operations Centre  
Dubbo Showground - Exhibition Pavilion  
Cnr Fitzroy/Wingewarra Streets, Dubbo

## **Combat Agency Control/Operations Centre/s**

### **NSW Rural Fire Service**

Orana Team HQ  
Judy Jakins, Dubbo

### **NSW State Emergency Service**

Dubbo Local Unit  
Judy Jakins Drive, Dubbo

### **NSW State Emergency Service**

Macquarie Region  
160 Bultje Street, Dubbo

### **NSW Police**

Western Region  
Western Region Operations Centre (ROC)  
Dubbo Police Station  
143 Brisbane Street, Dubbo

### **NSW Police**

Orana Local Area Command  
Western Region Operations Centre (ROC)  
Dubbo Police Station  
143 Brisbane Street, Dubbo

### **Fire + Rescue NSW**

Area/Region Office  
15 Whylandra Street, Dubbo

### **NSW Department of Primary Industries**

Western Region  
34 Hampden Street, Dubbo

### **Western NSW Local Health District**

Area Office  
23 Hawthorn Street, Dubbo

### **Police Station/s**

NSW Police  
Dubbo Police Station  
143 Brisbane Street, Dubbo



NSW Police  
Orana Local Area Command  
Dubbo Police Station  
143 Brisbane Street, Dubbo

NSW Police  
Region Emergency Operations Centre  
NSW Police - Western Region Operations Centre (ROC)  
Dubbo Police Station  
143 Brisbane Street, Dubbo

### **Fire Station/s**

Fire + Rescue NSW  
Dubbo Brigade  
102 Wheelers Lane, Dubbo

Fire + Rescue NSW  
Delroy Brigade  
15 Whylandra Street, Dubbo

### **Ambulance Station/s**

NSW Ambulance  
Dubbo Ambulance Station  
Windsor Parade, Dubbo

NSW Ambulance  
Regional Operations Division  
62 Windsor Parade, Dubbo

NSW Ambulance  
'000' Operations Centre (part of State System)  
62 Windsor Parade, Dubbo

NSW Ambulance  
Western Sector Office  
Bultje Street, Dubbo

### **Rural Fire Service Units**

NSW Rural Fire Service  
Dubbo Headquarters Brigade  
Judy Jakins Drive, Dubbo

NSW Rural Fire Service  
Dubbo Communications Brigade  
Judy Jakins Drive, Dubbo

NSW Rural Fire Service  
State Mitigation Support Services  
Judy Jakins Drive, Dubbo

There are 16 brigades located within the RFS - Orana Team area, across Dubbo and Narromine LGAs.

Dubbo based brigades are:

NSW Rural Fire Service  
Eumungerie Brigade  
Lot 12 - Balladoran Road, Eumungerie

NSW Rural Fire Service  
Ballimore Brigade  
Lot 5 - Bomen Street, Ballimore

NSW Rural Fire Service  
Eulomogo Brigade  
Eulomogo Road  
Firgrove Estate, Dubbo

NSW Rural Fire Service  
Minore Brigade  
15L Sappa Bulga Road, Dubbo

NSW Rural Fire Service  
Wongarbon Brigade  
Lot 205 Derribong Street, Wongarbon

NSW Rural Fire Service  
Terramungamine Brigade  
Burroway Street, Brocklehurst

NSW Rural Fire Service  
Benalong Brigade  
166 Nubingerie Road, Dubbo

NSW Rural Fire Service  
Boothenba Brigade  
1L Durraween Lane, (Golden Highway) Dubbo

NSW Rural Fire Service  
Burrabadine Brigade  
Narromine Road, (Mitchell Highway) Dubbo

NSW Rural Fire Service  
Cumboogle Brigade  
88R Obley Road, Dubbo

NSW Rural Fire Service  
Emmagool Brigade  
Lot 300 Obley Road, Dubbo

NSW Rural Fire Service  
Eschol Brigade  
60L Old Dubbo Road, Dubbo



NSW Rural Fire Service  
Mogriguy Brigade  
Lot 22 Mogriguy Road, Dubbo

NSW Rural Fire Service  
Mountain Creek Brigade  
7L Mountain Creek Road, Dubbo

### **State Emergency Service Unit**

NSW State Emergency Service  
Dubbo Local Unit  
Judy Jakins, Dubbo

### **Accredited Rescue Units**

#### **Primary**

NSW Volunteer Rescue Association - Dubbo Rescue Squad  
Rescue Shed  
Judy Jakins Drive, Dubbo; and  
186 Cobra Street, Dubbo

#### **Secondary**

Fire + Rescue NSW  
Dubbo Brigade - Station 280  
102 Wheelers Lane, Dubbo

### **Hospitals, Medical Facilities and Capability**

#### **Dubbo Base Hospital**

Myall Street, Dubbo  
(Located at the Cnr Myall Street and Golden Highway)

Dubbo Base Hospital is a 170 bed hospital and part of the Western NSW Local Health District network of Health Facilities. It is a government owned facility.

Dubbo Health Service is a major rural referral health service providing a range of inpatient and outpatient services including emergency, general medical and surgical, mental health, maternity, gynaecology, paediatrics, critical care, diagnostic services, cancer care, renal dialysis and palliative care.

Note: The facility is currently undergoing a major construction upgrade.

#### **Dubbo Private Hospital**

Moran Drive, Dubbo

Dubbo Private Hospital is a 51 bed medical, surgical and post-natal hospital.

It has a diverse range of specialties and services including:

- Day Procedure Centre
- Post-natal Unit (with elective caesarean)
- General Medical and Surgical
- Rehabilitation
- Dedicated Children's Ward
- Sleep Studies

### **Lourdes Hospital and Community Health Service**

4 Tony McGrane Place, Dubbo

Lourdes Hospital and Community Health Service (Lourdes) is a Third Schedule Public Hospital managed by Catholic Healthcare and subsidised by the NSW Government through NSW Ministry of Health. Lourdes is fully accredited by the Australian Council on Healthcare Standards.

Lourdes is an integral part of the health precinct for Dubbo and the western region, which comprises public and private hospitals, residential and community aged care services, the Dubbo Clinical School, School of Rural Health, Sydney University Dubbo Campus and Charles Sturt University.

The services and programs provided by Lourdes are diverse and supplement many of the health and community services available in the Western NSW Local Health District.

Lourdes provides:

- Aged Care Assessment Team
- Brain Injury Rehabilitation Program
- Community Nursing
- Continence Advice
- Grief Helpline
- Geriatric Evaluation Management
- Rehabilitation
- Hydrotherapy Pool
- Lymphoedema
- Nutrition and Dietetics
- Occupational therapy
- Palliative care
- Prosthetics
- Physiotherapy
- Rural Spinal Cord Injury Program
- Pastoral Care
- Social Welfare
- Speech Pathology
- Transitional Aged Care

**Refer to Facility Information for all hospitals**  
**ANNEXURE E: Vulnerable Facilities - Hospitals (Pages 83 to 85)**



**Fuel Storage Facilities: Facility Profile**

**Inland Petroleum**

<b>Inland Petroleum</b>	<b>Facility Name</b>	<b>Address</b>	<b>Phone</b>
		109 Erskine Street, Dubbo	1800 638 700
			5853 2400
		<b>Staff:</b> 15 in Depot (various drivers) site is a 24/7 facility.	
	<b>Above Ground and Underground Tanks</b>	<b>Fuel Type</b>	<b>Storage Details</b>
		Petrol	<b>Refer ANNEXURE No. 22</b> Inland Petroleum's Safe Work NSW Dangerous Goods listing.
		Distillate	
	<b>Storage Shed</b>	Lubricants	
	Inland Petroleum truck configurations include: AB triple, BA triple, 19 metre, 25 metre, road train, truck and dog and rigid		
	<b>Notes:</b>		
<ul style="list-style-type: none"> <li>• All fuel is transported IN and OUT of facility via road.</li> <li>• Average 40 truck movements per week.</li> <li>• Over 1 million litres of fuel is distributed through the facility weekly.</li> <li>• Fuel arrives from various locations, which include Newcastle via the Golden Highway and from Queensland.</li> </ul>			
<b>Location:</b>			
Facility is located: <ul style="list-style-type: none"> <li>• Fronting the Golden Highway (Erskine Street, Dubbo).</li> <li>• Adjoining the Dubbo Railway Yards.</li> <li>• Close to Lowes Petroleum Depot Facility.</li> <li>• Near Furney's Pet Food and Stock Feed Warehouse/retail facility.</li> </ul>			

## Fuel Storage Facilities: Facility Profile

### Lowes Petroleum

<u>Facility Name</u>	<u>Address</u>	<u>Phone</u>		
Lowes Petroleum	105 Erskine Street, Dubbo	Emergency No: 1800 784 887 [call received at contracted call centre] 6883 6440		
	<b>Staff:</b> 6 (2 most of the time onsite, 4 delivery staff)			
	All above ground tanks	<b>Fuel Type</b>	<b>Storage Details</b>	
		Petrol	200,000 litres	
		Distillate	500,000 litres	
	Storage Shed	Lubricants	Extensive quantities.	
	<b>Notes:</b>			
<ul style="list-style-type: none"> <li>• All fuel is transported IN and OUT of facility via road.</li> <li>• Average five (5) B-double truck movements IN per week.</li> <li>• Fuel quantity moved each week averages 250,000 litres.</li> <li>• All fuel IN arrives from Newcastle via the Golden Highway.</li> </ul>				
<b>Location:</b>				
Facility is located:				
<ul style="list-style-type: none"> <li>• Fronting the Golden Highway (Erskine Street, Dubbo)</li> <li>• Adjoining the Dubbo Railway Yards.</li> <li>• Close to Inland Petroleum Facility.</li> </ul>				



## **Troy Junction (North Dubbo)**

**Location:** 5L Boothenba Road, Dubbo

**Owner:** Toll Mining Services

The Facility is inspected regularly by authorities that include NSW Police and Fire + Rescue NSW.

The Facility has Emergency and Pollution Incident Response Management Plans.

Fire + Rescue NSW - Station 280 (Dubbo) has completed a FRNSW - Pre-incident Plan (PIP) for the facility (September 2019).

The facility is fitted with fire water supply (2 x 45,000litre in capacity onsite tanks that are directly connected to the water main town water supply); Fire water pumps; fire hydrants; hose reels and portable fire extinguishers.

A site evacuation siren is positioned on the front warehouse. The alarm is activated by a push button. The facility has a centrally positioned siren which provides an audible alarm for personnel to evacuate the facility. The dangerous goods warehouse has smoke detectors connected to the alarm system. The chlorine store has gas sensors with a back to base monitoring system. Monitoring system then makes direct contact to emergency services (000).

### **Facility Emergency Procedures**

The response to any abnormal event within the facility is governed by the philosophy and procedures detailed in the facility emergency response plan. The plan provides details on what is a pollution incident and the notification requirements under legislation if such an event occurs. Specific response procedures, such as chemical spill or gas release, are covered in the facility emergency response plan.

The facility emergency plan indicates that emergency services will be contacted by '000'. The primary first response request call will be made to Fire + Rescue NSW.

## Evacuation Centres, Activation and Capacity

<b>Centre Name:</b>			
<b>Dubbo PCYC</b>			
Street address:		Darling Street	
Suburb/town:		Dubbo	
Nearest cross street/landmark:		Cnr: Darling and Erskine Streets	
Coordinates:		32.2442 S/148.6055 E	
Facility OWNER:		Police Citizens Youth Club NSW Pty Ltd	
Facility type:		Youth Centre: Hall and Sporting Facilities	
<b>Contacts:</b>			
<b>Primary Activation Contact:</b>		<b>Alternate Activation Contact:</b>	
Name:	Mark Nuttall	Name:	Sally Treacey
Telephone:	68823273	Telephone:	6882 3273
Mobile:	0419610566	Mobile:	0408 411 250
Other:	Dubbo Police Station	Telephone:	6883 1599
<b>Capacity:</b>			
Short term (2.0 m <sup>2</sup> per person)		400	
Long term (3.5 m <sup>2</sup> per person)		200	
Time required to setup		15 minutes	
Last audit date		31/07/2019	

<b>Centre Name:</b>			
<b>Club Dubbo [formally known as: West Dubbo Bowling Club]</b>			
Street address:		Whylandra Street (Newell Highway)	
Suburb/town:		Dubbo	
nearest cross street/ landmark:		Minore Road	
Coordinates:		32.25485 S/148.5894 E	
Facility owner:		Club Dubbo	
Facility type:		Registered Club	
<b>Contacts:</b>			
<b>Primary Activation Contact:</b>		<b>Alternate Activation Contact:</b>	
Name:	Rod Firth	Name:	Ann Clark
Telephone:	6884 3000	Telephone:	
Mobile:	0418 966 062	Mobile:	0418 912 568
Other:	<a href="mailto:ceo@clubdubbo.com.au">ceo@clubdubbo.com.au</a>	Other:	<a href="mailto:admin@clubdubbo.com.au">admin@clubdubbo.com.au</a>
<b>Capacity:</b>			
Short term (2.0 m <sup>2</sup> per person)		400	
Long term (3.5 m <sup>2</sup> per person)		400	
Time required to setup		30 minutes	
Last audit date		31/07/2019	



<b>Centre Name:</b>			
<b>Dubbo RSL Club [Refer Appendix No. 14]</b>			
Street address:	178 Brisbane Street		
Suburb/town:	Dubbo		
Nearest cross street/landmark:	Wingewarra Street		
Coordinates:	32.2500 S/148.6040 E		
Facility owner:	Dubbo RSL Club		
Facility type:	Registered Club		
<b>Contacts:</b>			
<b>Primary Activation Contact:</b>		<b>Alternate Activation Contact:</b>	
Name:	Rebecca Zaia	Name:	Gus Lico
Telephone:	6882 4411	Telephone:	6882 4411
Mobile:	0418 615 350	Mobile:	0407 506 571
Other:		Other:	
<b>Capacity:</b>			
Short term (2.0 m <sup>2</sup> per person)	700 [NOT including two (2) storey undercover car park]		
Long term (3.5 m <sup>2</sup> per person)	500		
Time required to setup	10 minutes [Open every day except Christmas Day] After hours setup still 10 minutes. Just requires security company attendance.		
Last audit date	31/07/2019		

<b>Centre Name:</b>			
<b>Dubbo College - Delroy Campus [Refer Appendix No. 15]</b>			
Street address:	East Street		
Suburb/town:	Dubbo		
Nearest cross street/landmark:	Alcheringa Street		
Coordinates:	32.2510 S/148.5827 E		
Facility owner:	NSW Department of Education		
Facility type:	High School - Public		
<b>Contacts:</b>			
<b>Primary Activation Contact:</b>		<b>Alternate Activation Contact:</b>	
Name:	Debbie Head	Name:	Anthony Kirkland
Telephone:	6882 7955	Telephone:	
Mobile:	0400 336 694	Mobile:	0400 138 281
Other:		Other:	
<b>Capacity:</b>			
Short term (2.0 m <sup>2</sup> per person)	600 [Seat 700]		
Long term (3.5 m <sup>2</sup> per person)	250		
Time required to setup	30 minutes		
Last audit date	31/07/2019		

<b>Centre Name:</b>			
<b>Dubbo College - South Campus</b>			
Street address:	75 Boundary Road		
Suburb/town:	Dubbo		
Nearest cross street/landmark:	Fitzroy Street		
Coordinates:	32.2687 S/148.6118 E		
Facility owner:	NSW Department of Education		
Facility type:	High School - Public		
<b>Contacts:</b>			
<b>Primary Activation Contact:</b>		<b>Alternate Activation Contact:</b>	
Name:	Linda MacLeod (Principal)	Name:	Darrell Hines
Telephone:	6882 3744	Telephone:	6882 1978
Mobile:	0477 372 653	Mobile:	0427 361 933
Other:	<a href="mailto:linda.macleod@det.nsw.edu.au">linda.macleod@det.nsw.edu.au</a>	Other:	
<b>Capacity:</b>			
Short term (2.0 m <sup>2</sup> per person)	900		
Long term (3.5 m <sup>2</sup> per person)	900 (includes class rooms)		
Time required to setup	30 minutes		
Last AUDIT DATE	29/10/2015		

<b>Centre Name:</b>			
<b>South Dubbo Primary School</b>			
Street address:	Fitzroy Street		
Suburb/town:	Dubbo		
Nearest cross street/landmark:	Hutchins Avenue		
Coordinates:	32.2638 S/148.6106 E		
Facility owner:	NSW Department of Education		
Facility type:	Primary School - Public		
<b>Contacts:</b>			
<b>Primary Activation Contact:</b>		<b>Alternate Activation Contact:</b>	
Name:	Sharon Murray	Name:	Neva Pengilly
Telephone:	6882 2529	Telephone:	0419 496 284
Mobile:	0429 845 174	Name:	
Other:		Mobile:	
<b>Capacity:</b>			
Short term (2.0 m <sup>2</sup> per person)	700		
Long term (3.5 m <sup>2</sup> per person)	350		
Time required to setup	30 minutes		
Last audit date	31/07/2019		



<b>Centre Name:</b>			
<b>Dubbo School of Distance Education [Refer Appendix No. 18]</b>			
[on same site as Buninyong Primary School]			
Street address:	Myall Street		
Suburb/town:	Dubbo		
Nearest cross street/landmark:	Websdale Drive/Hume Street		
Coordinates:	32.2429 S/148.6390 E		
Facility owner:	NSW Department of Education		
Facility type:	Primary School - Public		
<b>Contacts:</b>			
<b>Primary Activation Contact:</b>		<b>Alternate Activation Contact:</b>	
Name:	Jenny Donovan	Name:	Debbie Murray
Telephone:		Telephone:	5804 7000
Mobile:	0408 023 792	Name:	Stephen Clayton
Other:		Mobile:	0431 187 384
<b>Capacity</b>			
Short term (2.0 m <sup>2</sup> per person)	Facility has onsite dormitory accommodation 42 beds plus four (4) private rooms - two (2) rooms with private amenities.		
Long term (3.5 m <sup>2</sup> per person)	Facility has commercial kitchen amenities. Facility has extensive video conferencing facilities.		
Time required to setup	One (1) hour		
Last audit date	31/07/2019		

<b>Buninyong Primary School [on same site as School of Distance Education]</b>			
Street address:	Myall Street		
Suburb/town:	Dubbo		
Nearest cross street/landmark:	Websdale Drive/Hume Street		
Coordinates:	32.2429 S/148.6390 E		
Facility owner:	NSW Department of Education		
Facility type:	Primary School - Public		
<b>Contacts:</b>			
<b>Primary Activation Contact:</b>		<b>Alternate Activation Contact:</b>	
Name:	Anne Van Dartel (Principal)	Name:	Kate Dargan
Telephone:	6884 9806	Telephone:	6884 0147 (home)
Mobile:	0400 330 252	Mobile:	0401 627 532
Other:	<a href="mailto:anne.vandartel@det.nsw.edu.au">anne.vandartel@det.nsw.edu.au</a>	Other:	
<b>Capacity</b>			
Short term (2.0 m <sup>2</sup> per person)	200		
Long term (3.5 m <sup>2</sup> per person)	100		
Time required to setup	15 minutes		
Last audit date	31/07/2019		



<b>Centre Name:</b>			
Orana Heights Primary School [Refer Appendix No. 19]			
Street address:		Oak Street	
Suburb/town:		Dubbo	
Nearest cross street/landmark:		Wheelers Lane/Alder Place	
Coordinates:		32.253177 S/148.62736 E	
Facility owner:		NSW Department of Education	
Facility type:		Primary School - Public	
<b>Contacts:</b>			
<b>Primary Activation Contact:</b>		<b>Alternate Activation Contact:</b>	
Name:	Annie Munro - Principal	Name:	Susan Mestrom
Telephone:	6884 9188	Telephone:	6884 9188
Mobile:	0488 640 809	Mobile:	0434 462 611
Other:		Other:	
<b>Capacity</b>			
Short term (2.0 m <sup>2</sup> per person)		700	
Long term (3.5 m <sup>2</sup> per person)		570	
Time required to setup		2 hours	
Last audit date		31/07/2019	

<b>Centre Name:</b>			
Expo Centre Dubbo Showground [Refer Appendix No. 20]			
Street address:		Cnr Wingewarra and Fitzroy Street	
Suburb/town:		Dubbo	
Nearest cross street/landmark:		Wingewarra/Fitzroy	
Coordinates:		32.2470 S/148.6162 E	
Facility owner:		Dubbo Regional Council	
Facility type:		Exhibition Centre	
<b>Contacts:</b>			
<b>Primary Activation Contact:</b>		<b>Alternate Activation Contact:</b>	
Name:	David Brill	Name:	Dubbo Regional Council
Telephone:	6801 4544	Telephone:	6801 4000
Mobile:	0436 924 380	Mobile:	
Other:		Other:	
<b>Capacity</b>			
Short term (2.0 m <sup>2</sup> per person)		400	
Long term (3.5 m <sup>2</sup> per person)		240	
Time required to setup		2 hours	
<b>Note:</b> Open showground space also available with other undercover facilities - Pavilions.			
Last audit date		2/08/2019	



<b>Centre Name:</b>			
<b>Dubbo Sportsworld</b>			
Street address:	163 Sheraton Road		
Suburb/town:	Dubbo		
Nearest cross street/landmark:	Mitchell Highway		
Coordinates:	32.2645 S/148.6447 E		
Facility owner:	Private - Dubbo Indoor Sports Centre		
Facility type:	Indoor Sports Centre		
<b>Contacts:</b>			
<b>Primary Activation Contact:</b>		<b>Alternate Activation Contact:</b>	
Name:	Greg King	Name:	Dan French
Telephone:	6884 0123	Telephone:	
Mobile:	0411 265 485	Mobile:	0457 135 224
Other:	<a href="mailto:greg@dubbosportsworld.com.au">greg@dubbosportsworld.com.au</a>	Other:	
<b>Capacity</b>			
Short term (2.0 m <sup>2</sup> per person)	1,500		
Long term (3.5 m <sup>2</sup> per person)	900		
Time required to setup	2 hours		
<b>Note:</b> Facility adjoins 'Aussie Cabins' accommodation. Student/sporting team type accommodation.			
Last audit date	5/08/2019		

### Briefing/Information Centre

<b>Centre Name:</b>			
<b>Dubbo Regional Theatre and Convention Centre</b>			
Street address:	155 Darling Street		
Suburb/town:	Dubbo		
Nearest cross street/landmark:	Church Street		
Coordinates:	32.2465 S/148.6043 E		
Facility owner:	Dubbo Regional Council		
Facility type:	Entertainment and Convention Centre		
<b>Contacts:</b>			
<b>Primary Activation Contact:</b>		<b>Alternate Activation Contact:</b>	
Name:	Linda Christof	Name:	Scott McTiernan
Telephone:	6801 4370	Phone:	6801 4375
Mobile:	0427 464 407	Mobile:	0417 948 201
Other:	<a href="mailto:linda.christof@dubbo.nsw.gov.au">linda.christof@dubbo.nsw.gov.au</a>	Other:	<a href="mailto:scott.mctiernan@dubbo.nsw.gov.au">scott.mctiernan@dubbo.nsw.gov.au</a>
<b>Capacity</b>			
Short term (2.0 m <sup>2</sup> per person)	500 seat theatre, hall with tables and chairs 750		
Time required to setup	2 hours		
Last audit date	5/08/2019		

## NEIGHBOURHOOD SAFER PLACES (NSP)

The LEMC in cooperation with RFS has identified 'Neighbourhood Safer Places' (NSP) for use of public affected by catastrophic bush fire situations. A NSP should only be used as a place of last resort during a bush fire emergency.

Identified NSPs in Dubbo City are located at:

Title	Type	Location
Dubbo Racecourse	Building	Merrilea Lane
Lady Cutler Park	Open space	Bligh Street
East Dubbo Sports Complex	Open space	Cobra Street
Pioneer Park	Open space	Howard Avenue, West Dubbo
Ballimore Fire Station	Building	Bunyip Street, Ballimore
Eumungerie Fire Station	Building	Balladoran Street, Eumungerie
Wongarbon Public School	Open Space	Railway Street, Wongarbon

Note: NSPs are emergency Assembly Areas for community members to relocate to during bushfire/grassfire events.  
There will be no established 'Evacuation Centres' or formal Welfare Service arrangements at NSPs.

## RECOVERY CENTRES:

The following facilities have been assessed as being suitable for the establishment of Recovery Centre/s in the Dubbo Local Emergency Management Area:

- **Dubbo Showground - Woolpack Centre (Wingewarra/Fitzroy Streets, Dubbo)**
- **Dubbo PCYC (Darling Street, Dubbo)**

## COMMUNITY BRIEFING FACILITIES:

The following facilities have been assessed as being suitable for the establishment of 'Community Assembly/Briefing Centre/s' in the Dubbo Local Emergency Management Area:

- **Dubbo RSL Club - Theatrette (Registered Club: Brisbane Street, Dubbo)**
- **Dubbo Sportsworld - (Private Sports Facility: Sheraton Road, Dubbo)**
- **Dubbo Regional Theatre and Convention Centre - (Dubbo Regional Council owned facility: Darling Street, Dubbo)**



## Key Infrastructure:

Communications, power and transport representatives are available to supply local support. Electricity is supplied throughout the City, predominantly aerial wires with newer residential subdivisions using underground cabling.

Electricity: Dubbo is supplied from two feeders from Wellington and is dependent on a single major transgrid substation at Wellington.

Water Supply: Dubbo and three of the villages (Wongarbon; Brocklehurst and Ballimore) have connected town water supply.

Sewerage: Dubbo; Wongarbon and Brocklehurst.

Natural Gas: Supplied to and from Dubbo by underground pipes with only transfer stations above ground. A gas pipeline runs from Young to Tamworth with a diversion at Dubbo for service to Wellington.

Communications: The Dubbo area is linked to other regional and metropolitan areas by optical fibre transmission networks. The Dubbo telephone exchange is fully digital.

The national NBN program is currently being installed within areas across Dubbo, as is complete in most areas.

## Power Stations, Sub Stations and Key Distribution Points

### Electrical Sub-Stations

Dubbo 132kv - Bulk Supply Point

Dubbo Sub 132/66kv

Wheelers Lane (adjacent to Railway Crossing), Dubbo

Dubbo Eulomogo Sub

66/11kv

Energy Place (off Sheraton Road), Dubbo

Dubbo Phillip Street Sub

66/11kv

Phillip Street (behind Ashley's Building Supplies), Dubbo

Dubbo West Sub

132/11kv

Jannali Road, Dubbo

Dubbo South Sub

132/11kv

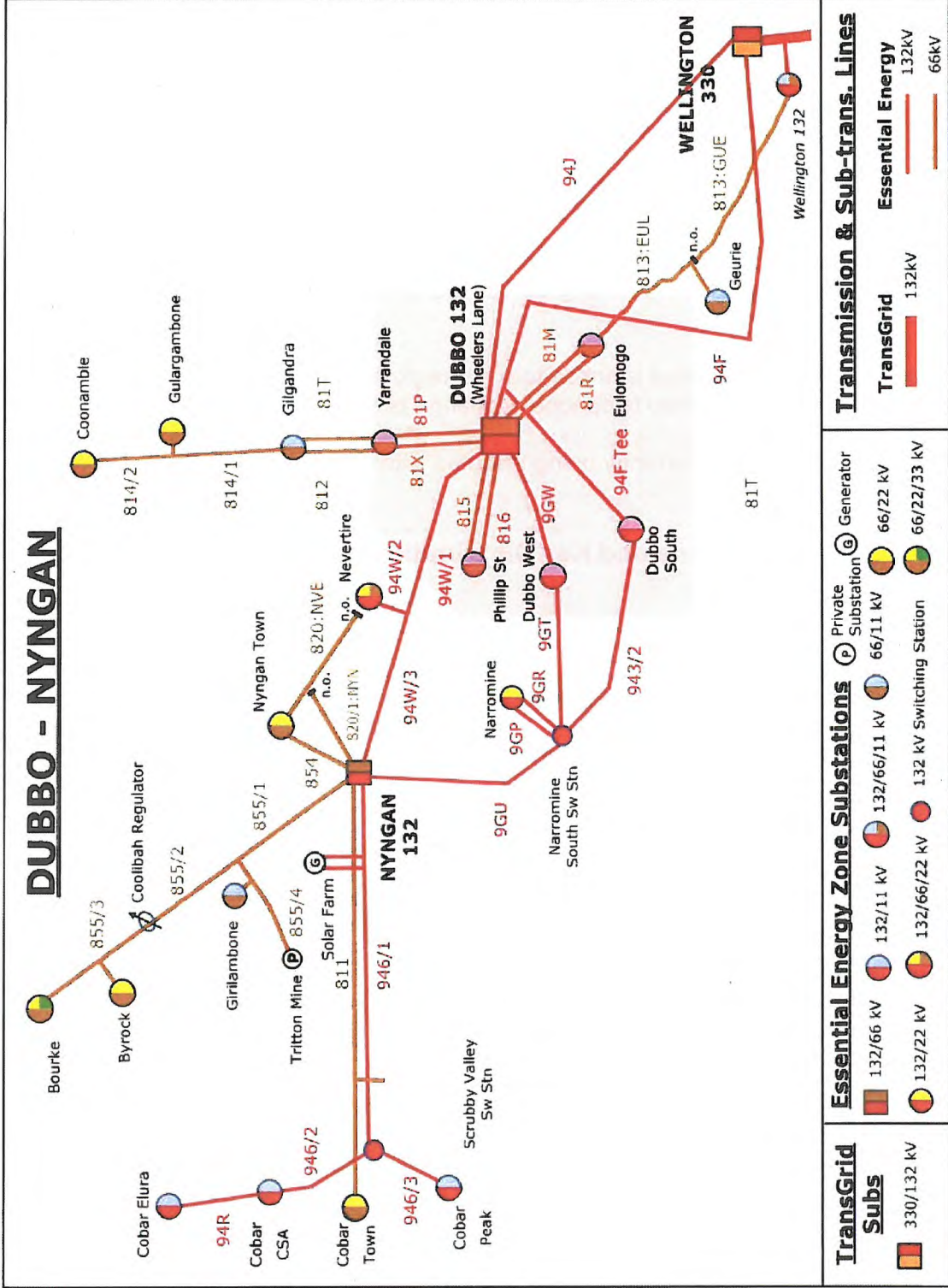
Wheelers Lane (near Dawson Park Greyhound Racing Track), Dubbo

Yarrandale Sub

66/11kv

Yarrandale Road (near Fletchers International Export Abattoir), Dubbo

MAP - Electricity Grid Plan Dubbo/Nyngan





## Water Treatment and Key Distribution Networks

Dubbo sources its drinking water supply from both the Macquarie River and seven groundwater bores within the South Dubbo Borefield. Surface water is pumped from the South Dubbo Weir in the Macquarie River 0.5 km west of the Water Treatment Plant. The bores are located in two clusters in South Dubbo between Tamworth Street and Boundary Road, and on the Eulomogo Creek alluvial flats near the Wheelers Lane/Hennessy Drive intersection.

The water from both sources is treated at the John Gilbert Water Treatment Plant in Macquarie Street, South Dubbo (opposite the intersection with Wheatleys Lane). Water from this single WTP serves Dubbo and the nearby villages of Brocklehurst, Wongarbon, Ballimore, Mogriguy and Eumungerie.

Dubbo also makes extensive use of non-treated water for irrigation of playing fields and recreation reserves throughout the City. These sources include four other bores, the Macquarie River, and stormwater harvested at various locations.

Drinking water from the John Gilbert WTP is pumped directly to reservoirs in Central Dubbo (three pumps), West Dubbo (three pumps) and East Dubbo (three pumps) via major trunk pressure mains. There are also secondary booster pump stations located elsewhere in the City which distribute water further afield or act as alternative back-up to direct pumping from the WTP.

The service reservoirs in the City are located as follows:

- Newtown Hill (five reservoirs) - Fitzroy Street near Tamworth Street, serves Central and South Dubbo.
- Myall Street (two reservoirs) - at Wheelers Lane intersection, serves North Dubbo.
- Buninyong (two reservoirs) - on Mugga Hill off Harefield Road, East Dubbo, serves north-east Dubbo.
- Eulomogo (one reservoir) - off eastern end of Railway Lane, East Dubbo, serves south-east Dubbo.
- Yarrandale Road (one reservoir) - 1.2 km north of Purvis Lane, serves North Dubbo Industrial area and Brocklehurst.
- Wongarbon (one reservoir) - eastern edge of the Village, serves Wongarbon, part of Firgrove Estate, and Ballimore via a trunk gravity main along Westella and Ballimore roads.
- Ballimore (one reservoir) - Ballimore Road 2 km south of the Village, serves Ballimore only.
- Rifle Range Road (two reservoirs) - high point 1 km west of the Newell Highway, serves south-west Dubbo, Camp Road Tourist Precinct and high ground near the Airport.
- Bourke Hill (one reservoir) - Mitchell Highway 0.6 km west of Jannali Road, serves west and north-west Dubbo.
- Eumungerie (one reservoir) - on the Mogriguy Road 4 km north of Mogriguy.

Booster pump stations are located at:

- Elston Park (NE corner) - pumps to Myall Street reservoir.
- Erskine Street (intersection with Darling Street) - pumps to Myall Street reservoir.
- Cobbora Road (intersection with Tony McGrane Place) - pumps to Yarrandale Reservoir.
- Newtown - located at Newtown Reservoir site to boost water to a 25 m standpipe reservoir at that location.
- Myall Street - adjacent to the Myall Street reservoir in Wheelers Lane - pumps to Buninyong and Eulomogo reservoirs if required
- Wongarbon booster, located in Railway Lane (not formed) at Firgrove Estate - pumps to Wongarbon reservoir (then by gravity to Ballimore).



- West Dubbo booster - located under the western abutment of the LH Ford Bridge, pumps to Bourke Hill reservoir if required.
- Brocklehurst - located in Wambianna Street, Brocklehurst, pumps to Eumungerie Reservoir via a trunk pressure main in Mogriguy Road.

### Sewerage Treatment and Key Networks

Council operates two Sewerage Treatment Plants serving Dubbo, Brocklehurst (the Dubbo STP) and Wongarbron (the Wongarbron STP). The Dubbo STP has a capacity of 55,000 equivalent persons (EP), but the Wongarbron STP is much smaller with a capacity of only 1,000 EP.

The Dubbo STP is located at Boothenba Road near the intersection with Yarrandale Road. The Wongarbron STP is located on the property Pine Avon approximately 1 km south-west of the Village boundary, with access from Pine Avon Road off River Road.

Sewerage is generally by gravity reticulation, but some industrial areas are served by pressure sewerage. Because of topography the sewerage system also incorporates 16 sewage pump stations of varying size to collect and then transport the incoming sewage to the two STPs. These pump stations are located as follows:

- Alfred Street, near intersection with Beni Street - serves inner West Dubbo, and accepts sewage pumped from the Cootha and Camp Road pump stations; then pumps sewage onwards to the Bunglegumbie SPS.
- Berida Street, Wongarbron, at the Railway Street intersection - pumps to the Wongarbron STP.
- Boothenba Road, just west of the Newell Highway - collects sewage from the Troy Junction Industrial Area and pumps it to the Dubbo STP.
- Bracken House, adjacent to the Macquarie Club in Macquarie Street, South Dubbo - collects sewage from Regand Park Estate and South Dubbo, then pumps it into the nearby gravity reticulation draining to the Erskine Street SPS.
- Thompson Street (intersection with Whylandra Street), pump station prior to Bunglegumbie Sewerage Treatment Plant, catches western inflow of the City.
- Brocklehurst, just off Dubbo Street - collects sewage from Brocklehurst Village and pumps it to Dubbo STP.
- Bunglegumbie SPS, located on rural land 1 km east of Bunglegumbie Road and 2.5 km north of Thompson Street - collects sewage from all of West Dubbo and pumps it the Dubbo STP via the Troy Bridge and Boothenba Road.
- Cootha SPS, located within land owned by the Taronga Western Plains Zoo 0.35 km north of the Obley Road and 0.5 km east of the Newell Highway - collects sewage from much of south-west Dubbo, and also accepts sewage pumped from the Camp Road SPS.
- Cooreena Road, West Dubbo, adjacent to the intersection with Mitchell Highway - collects sewage from the Airport and adjacent industrial estate, and pumps it to the main West Dubbo gravity reticulation network to the east of Bourke Hill.
- Erskine Street, at the intersection with Darling Street - Dubbo's original main pump station, collects sewage from North, Central and South Dubbo and pumps it to a major carrier sewer at the railway crossing in Cobbora Road 1.1 km to the east.
- Keswick SPS, Hennessy Drive 0.2 km east of Wheelers Lane - collects sewage from south-east Dubbo, and pumps it to the major carrier sewer running parallel to the railway line from High Street, South Dubbo to the Troy Gully Pump Station 3.5 km further north.
- Margaret Crescent, adjacent to Emerald Street - emergency pump station which only operates during extreme wet weather - pumps to the railway carrier sewer near High Street.
- Miriam SPS, adjacent to the railway line 0.2 km south-west of the Macquarie Street/Margaret Crescent intersection - collects sewage from residential land at the extremities of South Dubbo, and pumps it to the railway carrier sewer near High Street.



- Nita McGrath SPS - serves the netball complex at Macleay Street, North Dubbo; pumps sewage to the nearby gravity reticulation draining to Erskine Street SPS.
- Railway Street, Wongarbron, near the grain silo - collects sewage from the south-eastern section of Wongarbron, and pumps it to the nearby gravity reticulation draining down to the Berida Street SPS.
- Troy Gully SPS, located just north of River Street and east of the railway line in North Dubbo - largest SPS in Dubbo, collects sewage from all of the reticulation and other pump stations east of the Macquarie River, and pumps it to the Dubbo STP
- Camp Road (6L) adjacent to Rhino Lodge, initial intake from Camp Road area.

### Waste Disposal Facility

The main licensed waste disposal facility for the local government area is the Whylandra Waste and Recycling Centre, 16 km west of Dubbo off the Mitchell Highway. This landfill is licensed to receive Class 1 Solid Waste. The current licensed area has sufficient capacity for the next 50 years. This landfill is not licensed to dispose of hazardous waste or liquid waste.

### Fuel Depots

#### **Inland Petroleum** (formerly known as the Shell Depot)

109 Erskine Street (also Golden Highway), Dubbo

(Facility is adjacent to the railway line and located between Darling and Fitzroy Street)

REFER Page 57 - Facility Profile Information

#### **Lowes Petroleum** (formerly known as Mobil/BP Depot)

105 Erskine Street (also Golden Highway), Dubbo

(Facility is adjacent to the railway line and located between Darling and Fitzroy Street)

REFER Page 58 - Facility Profile Information

### Telephone Exchanges

Main Telephone Exchange for Dubbo is located at:

Telstra Building (upstairs - above Major Flood Height)

98 Macquarie Street, Dubbo (building located between Justice Place/Macquarie Street)

(The Exchange has internal generator for back-up electricity supply)

There are a large number of rural based exchanges within the LGA area that service rural areas. These are small 'hut' type structures that are supplied by mains electricity and have limited battery backup.

Telephone exchanges are located in all villages that provide land-line services to customers. These facilities are supplied by mains electricity and have limited battery backup provisions.

There are communication towers located throughout the Dubbo area that provide data and mobile telecommunications footprint for numerous telecommunication providers. The main service providers are Optus and Telstra.

(Refer Photo: Communications Tower. These towers are similar in size and construction)

The communication towers are both private and telecommunication company owned facilities. The towers are leased to individual telecommunication and data providers. It is common to have multi-telecommunication providers using the same tower/s.

The vast majority of the land-line telephone network in Dubbo operates via underground cabling. These services are 'fibre' based, resulting in large numbers of customers being serviced via single lines of fibre cabling.

There is extensive use of mobile phones and data based devices within the Dubbo LGA area, especially within Dubbo. Coverage across the vast majority of Dubbo area is excellent.

Telstra is the emergency management telecommunications provider for the NSW Emergency Management structure. Telstra has a Works Depot and trained technicians based in Dubbo. There are several Telstra contracted operators for the provision of 'Shop Front' services (sales of phones, inquiries, payments etc) located in Dubbo.

The Region Emergency Management Officer (REMO) maintains Regional and State level contacts for 'Communications Functional Area', which will be used to contact and access Telstra Emergency Management support as required.

### Mobile Phone Infrastructure Locations

Oliver House  
Church Street, Dubbo  
(Multi Storey Building located between Macquarie and Brisbane streets)

Bourke Hill Tower  
Narromine Road, Dubbo

Buninyong Tower  
22L Harefield Road, Dubbo

Elong Elong Tower  
Located 2 km towards Wellington on the Dunedoo - Wellington Road

Brookfield Tower  
Located 20 km from Dubbo towards Gilgandra on the Newell Highway

Wongarbon Tower  
Red Hill Road, Wongarbon

Four to six sites with towers for 4G networks are located at various locations within Dubbo.

These communication towers provide data and mobile telecommunications footprint for numerous telecommunication providers. The main providers are Optus and Telstra.

These towers are similar in size and construction.

Communication towers are both private and telecommunication company owned facilities. Towers are leased to individual telecommunication and data providers. It is common to have multi-telecommunication providers using the same tower/s.





Communications tower - towers are all similar in appearance

### **Satellite Phone Infrastructure Locations**

Global Star  
Satellite Station  
Burroway Road, Brocklehurst (north of Dubbo)

The site has multiple large size dishes that are controlled from the USA. These dishes track satellites in a programmed manner. This facility is one of two facilities located within Australia. The other facility is located in Queensland.

### **Radio Network Infrastructure**

Sappa Bulga Tower/s  
(High peak at northern end of Harvey Ranges - located in Narromine Shire Council area)  
Access via 42L Springvale Road (Off Tinks Road)

Location of FM commercial radio (Star FM/Zoo FM) transmission towers; telecommunication towers; GRN and emergency service radio towers. RFS Paging.

Buninyong Tower  
22L Harefield Road, Dubbo  
Key facility, contains several towers that service radio, television, phones and data systems. GRN radio network. Police and emergency service radios.

Bodangora Tower  
(Located on 'Bodangora' property north of Wellington 20 km from Wellington towards Mudgee)  
Radio Repeater. Police/RFS communications and paging. Television.

Dewars Trig Tower  
Intersection Mendooran Road/Mogriguy Forest Road  
(Located between Dubbo and Mendooran within Goonoo Conservation Area)  
Radio Repeater. NSW Rural Fire Service/National Parks

Mogriguy Tower  
'Alton Park' Property  
Goodwins Lane, Mogriguy

NSW Rural Fire Service Paging.  
Cumbarella Tower  
'Cumbarella' Property  
Ballimore Road, Ballimore  
NSW Rural Fire Service Paging.

### **Commercial Broadcasting Infrastructure**

2DU Transmitter  
Eulomogo Road (near intersection Mitchell Highway/Eulomogo Road), Dubbo

Sappa Bulga Tower/s  
(High peak at northern end of Harvey Ranges - located in Narromine Shire Council area)  
Access via 42L Springvale Road (Off Tinks Road)  
Location of FM Commercial radio (Star FM/Zoo FM) transmission towers; telecommunication towers; GRN; Police and emergency service radio towers.