



Appendix A

Open Space and Recreation
Provision in Dubbo

Introduction

Purpose of the Study

Through the delivery of the Macquarie River North and South Precincts Master Plan, Dubbo Regional Council is committed to achieving the best outcome based on the most accurate data to determine the needs of the community. The implementation of the plan is intended to be an ongoing process that will adapt to ongoing community needs, rather than working to a predetermined timeframe.

The purpose of this study is to provide a high-level assessment of open space and recreation opportunities within the Dubbo region, and understand the community demand now, and into the future. The development of the Landscape Master Plan has focused on the provision of sporting fields within the Macquarie River foreshore area without a clear understanding of future demands and opportunities within the wider region.

This study has been prepared as an appendix to the Macquarie River North and South Precincts Master Plan Report and is intended as a brief overview of existing and future demands for open space and recreation opportunities within the Dubbo Regional Local Government Area (LGA). In addition to this document, the Dubbo Regional Council Chief Executive Officer will produce a report at the same Ordinary Meeting of Council, at which the Draft Master Plan will be considered. The report will detail all available Council owned or administered land that could be used for passive open space and sporting fields, in order to best inform Councillors and the community on current and future demands considerate of population projections and future development within the Dubbo region.

Growth of the Dubbo Region

The Dubbo Regional LGA includes the city of Dubbo, the town of Wellington and the villages of Geurie, Wongarbron, Stuart Town, Mumbil, Ballimore, Elong Elong and Eumungerie. The LGA occupies an area of 7,536km² across the central western plains of NSW. The 2020 Local Strategic Planning Statement prepared by Dubbo Regional Council identifies the region as a key strategic centre for inland NSW and anticipates considerable growth and transformation over the next two decades.

The population for the LGA is expected to grow from approximately 56,000 in 2022 to around 65,000 in 2040, of which approximately 84% are located in the city of Dubbo.

Dubbo's projected population growth needs to be sustainably planned to ensure the adequate provision of infrastructure and services. The sufficient provision of accessible and equitable open space, including both active and passive recreation should be considered to maintain a liveable, healthy and climate resilient city.

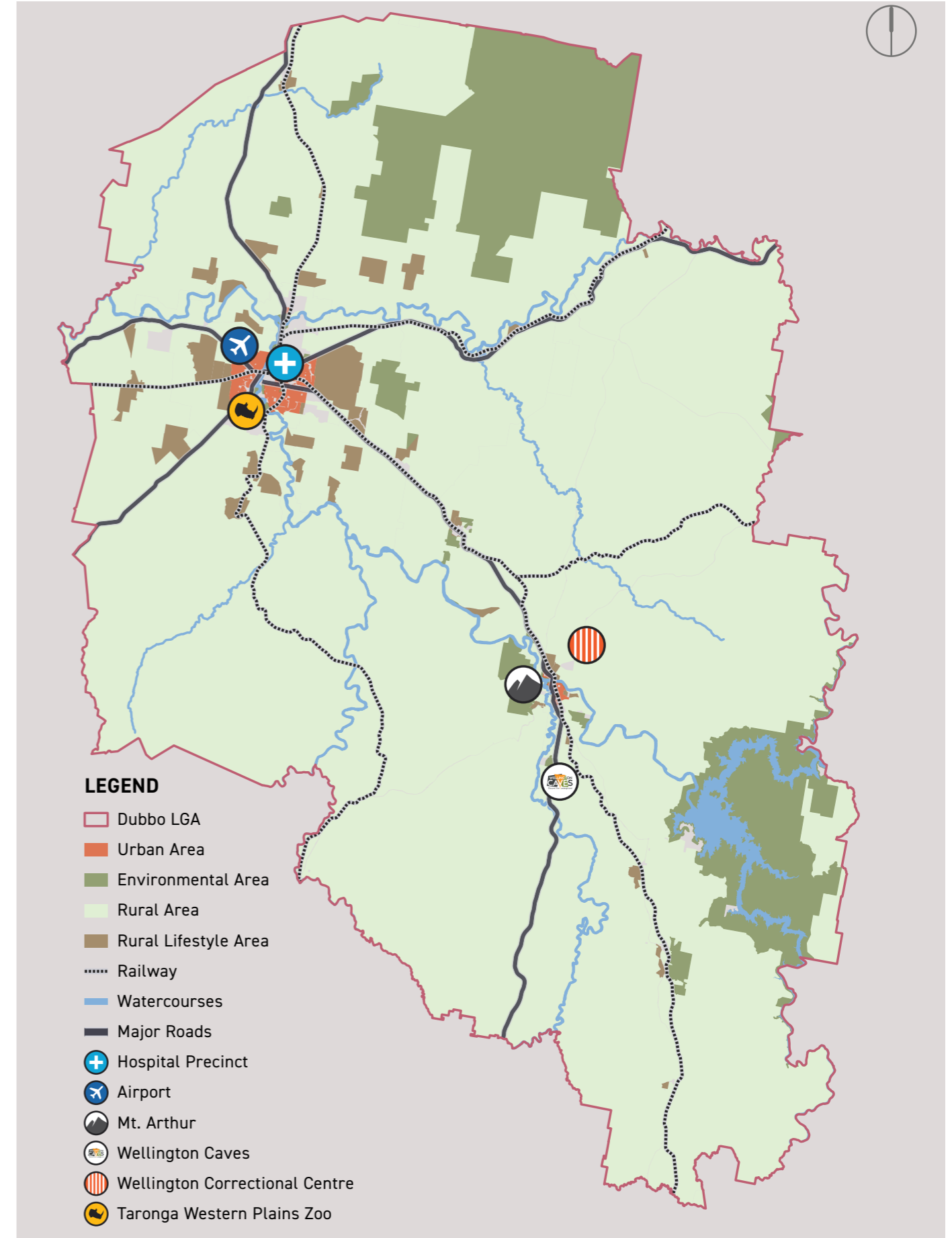
Dubbo Regional LGA:



Dubbo:



Regional Context Map



Excerpt from Local Strategic Planning Statement, DRC (2020), p.9

Existing Open Space Provision

Existing Dubbo Open Space Network

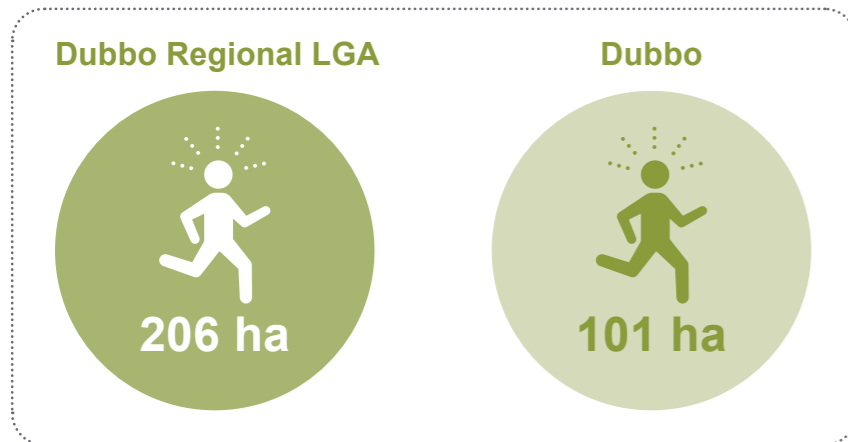
Dubbo LGA's existing open space network is distributed across the region in the form of sporting facilities, public parks and landcare reserves. Dubbo Regional Council's strategic documentation has predicted a shortfall in the passive open space offering for the region, and an even greater deficit in its sporting fields and facilities offering in the wake of a steadily growing population.

The location of existing public open space and recreational facilities within Dubbo City is identified in the analysis diagrams in Chapter 03 of this report. The following sections provide a current breakdown of open space that is managed by Council within the Dubbo Regional LGA .

Existing Sporting Facilities

Within the Dubbo Regional LGA, sporting facilities are recognised as areas where active recreational activities occur, generally in the form of organised sport. These areas include synthetic and turf surfaces, as well as supporting facilities.

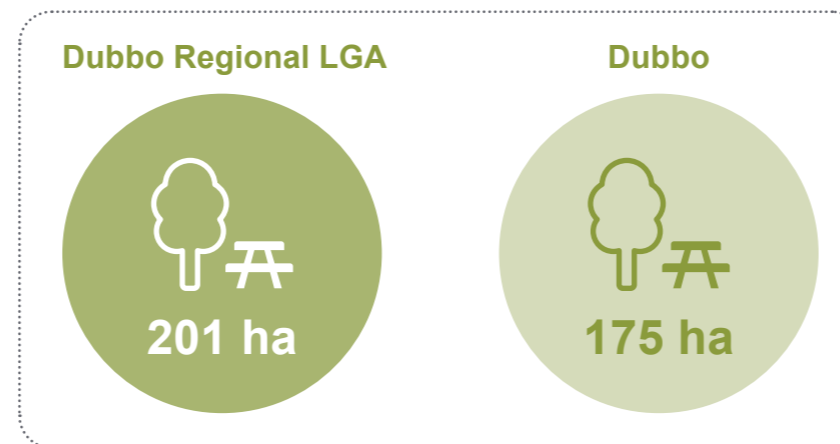
Total area of sporting facilities, 2022:



Existing Public Parks

Within the Dubbo Regional Council LGA public parks refer to areas that are set aside for passive recreation. These are categorised as Regional, District, local or general infrastructure, according to the level of amenity, accessibility and size and quality. Facilities include playgrounds, skateparks, kiosks, amenities, pathways/cycleways, BBQs and lawn areas.

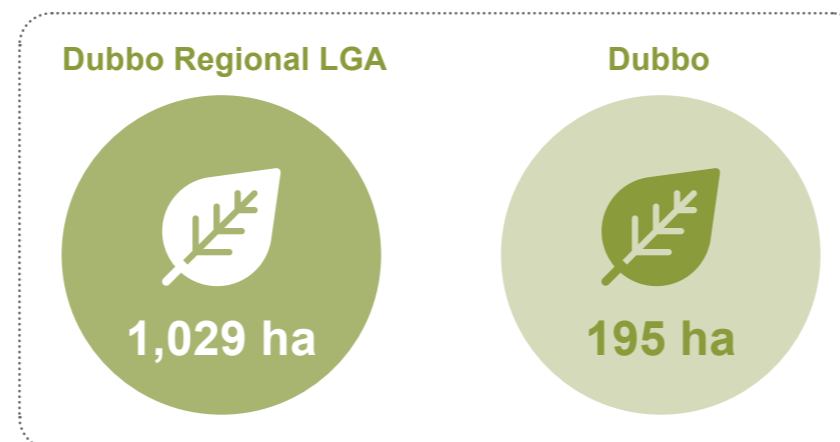
Total area of public parks, 2022:



Landcare Reserves

Landcare reserves are protected environmental areas managed by Council for their biodiversity value, water quality management and opportunities for research and learning. These spaces may offer low impact passive recreation opportunities and may be co-located with public parks. Features include native bushland, trees, water features, pathways, carparking and amenities.

Total area of Landcare reserves, 2022:



Macquarie River Foreshore

Both the north and south precincts of the Macquarie River foreshore area contain existing sporting complexes that include turf fields, netball courts, parking and amenities that service a number of sporting groups.

The table on the following pages provides a current breakdown of the sporting clubs associated with the Macquarie River North and South Precincts. As member intake continues to rise, the clubs have expressed concern over increasing pressures on current sporting facilities. As well as providing new active recreation areas, the Macquarie River North and South Precincts Master Plan identifies opportunities to improve the capacity and quality of existing sporting areas through moves such as a rationalised vehicular and pedestrian network, increased and formalised car parking, additional lighting and new club facilities. In addition to this, it is recommended that further investigation be undertaken to determine opportunities for new and improved sporting facilities within the wider Dubbo region.

Dubbo Region Sporting Club Statistics 2022

Sporting Club	Category	Member No.	Training Location	Competition Location	Pre-season Training Location	Notes
Dubbo Rhinos Rugby Club	Seniors	65	Katrina Gibbs Oval	Apex Oval main field	Katrina Gibbs Oval	
Dubbo Rugby Club	Total	152	Victoria Park No. 2/3 Oval	Victoria Park No. 1 Oval	Barden Park	
	Juniors	32				
	Seniors	120				
Dubbo Junior Rugby Club	Total	290	Victoria Park No. 2/3 Oval	Victoria Park No. 2/3 Oval	St Johns College	Running at capacity for training on a Monday, Tuesday and Thursday for training at Victoria Park. Running at capacity for wallas on a Friday night at Victoria Park
	Juniors	160				
	Wallas	130				
Dubbo District Football Association	Total	2351	Seniors - Lady Cutler East, Hans Claven Oval, Pioneer Oval	Seniors (winter) - Lady Cutler and Riverside (Pavans) Seniors (summer) - Lady Cutler East	Seniors - Hans Claven Oval, Lady Cutler East and Riverside (Pavans)	Running at capacity for senior training given have access to limited sporting ovals with lighting. Some clubs are training with 5 teams on one field. Lady Cutler East is overused all year round due to winter training and summer competition
	Junior 5-12	1340	Juniors - Riverside (Pavans), Lady Cutler East, Hans Claven, Pioneer Oval, Lady Cutler, Lady Cutler South	Juniors - Lady Cutler, Riverside (Pavans), Lady Cutler East and Lady Cutler South)		
	Youth 13-18	450				
	Senior 19+	561				
Dubbo District Junior Cricket Association	Total	547	Lady Cutler, Riverside (Pavans), Lady Cutler South, John McGrath Oval, Bob Dowling Oval, South Dubbo Oval Lady Cutler West and East Nets, Bob Stroud Nets, Dave Martin Nets	Lady Cutler, Victoria Park 2 &3, Riverside (Pavans), Lady Cutler South, John McGrath Oval, Bob Dowling Oval, Jubilee Oval, Pioneer Oval Wellington	Lady Cutler West and East Nets, Bob Stroud Nets, Dave Martin Nets	
	Juniors	450				
	Master and Junior Blasters	97				
Dubbo District Cricket Association	Total	414	Lady Cutler, Riverside (Pavans), Lady Cutler South, John McGrath Oval, Bob Dowling Oval, South Dubbo Oval Lady Cutler West and East Nets, Bob Stroud Nets, Dave Martin Nets	Lady Cutler, Victoria Park 1,2 &3, Riverside (Pavans), Lady Cutler South, John McGrath Oval, Bob Dowling Oval	Lady Cutler West and East Nets, Bob Stroud Nets, Dave Martin Nets	
	Senior teams	27				
Dubbo Netball Association	Total	1537	Nita McGrath Netball Courts	Nita McGrath Netball Courts		No further opportunity to expand hard courts at their current location. Currently not at capacity but in previous years have been close to capacity.
	Junior teams	116				
	senior teams	48				

Dubbo Region Sporting Club Statistics 2022

Dubbo CYMS RLFC	Total	80	Apex Oval Outer Fields	Apex Oval main field	Bob Dowling Oval and Pioneer Oval	
	Juniors	25				
	Seniors	55				
Dubbo Macquarie Raiders RLFC	Total	111	Apex Oval Outer Fields	Apex Oval main field	John McGrath Oval	
	Juniors	31				
	Seniors	88				
Goannas Western Women's Rugby League	Total	115	Apex Oval Outer Fields, Jubilee Oval and South Dubbo Oval	Apex Oval	NA	
	Juniors	75				
	Seniors	60				
South Raiders JRLFC	Total	357	Apex Oval Outer Fields	Apex Oval Outer Fields & Jubilee Oval	Katrina Gibbs Oval, John McGrath Oval & Jubilee Oval	
	Juniors	357				
St Johns JRLFC	Total	517	Apex Oval Outer Fields	Apex Oval Outer Fields & Jubilee Oval	Jubilee Oval and Bob Dowling Oval	At capacity for training across Apex Oval Outer Fields and Jubilee Oval on a Wednesday and Friday.
	Juniors	517				
Dubbo District Junior Rugby League Association	Total	1654	Apex Oval Outer Fields	See above St Johns & South Raiders	NA	Dubbo District JRL includes St Johns 517, Narromine 239, Nyngan 169, South Dubbo 357, Warren 113, Wellington 109 and Cobar 150. Each week games are played across the various towns. Dubbo some weeks are at capacity for competition on the Apex Oval Outer Fields
	Juniors	1654				
Dubbo Triathlon Club	Total	41	Dubbo Aquatic Leisure Centre & Dubbo Regional Cycling Facility	Ollie Robbins Oval	NA	
	Juniors	9				
	Seniors	33				
Dubbo Cycle Club	Total	159	Dubbo Regional Cycle Facility	Dubbo Regional Cycle Facility		
	Seniors	113				
	Juniors	46				
Dubbo Ultimate Frisbee Federation	Total	100	South Dubbo Oval	South Dubbo Oval	NA	
	Juniors	10				
	Seniors	90				
Dubbo Junior AFL Club	Total	90	South Dubbo Oval	South Dubbo Oval	South Dubbo Oval	
	Juniors	90				
Dubbo Demons AFL Club	Total	86	South Dubbo Oval	South Dubbo Oval	South Dubbo Oval	
	Seniors	86				

Dubbo Region Sporting Club Statistics 2022

Dubbo Touch Association	Total	1836	John McGrath Oval, Katrina Gibbs Oval & Bob Dowling Oval	Summer Seniors & Juniors - John McGrath Oval, Katrina Gibbs Oval & Bob Dowling Oval Winter - Katrina Gibbs Oval	NA	Dubbo Touch junior competition is at capacity as increased by 200 junior players from 2021 to 2022. Teams had to be turned away. Dubbo Touch mixed competition is getting close to capacity in summer and is a capacity for winter on a Monday. John McGrath Sports Lighting project will allow expansion of the junior and senior competition.
	Juniors	792				
	Seniors	1044				
Dubbo OZ Tag			NA	Katrina Gibbs Oval & Apex Oval Outer Fields	NA	Oz Tag is a new club to Dubbo. Finding a sporting oval to run their competition was challenging. They are having to play across two different locations based on availability.
Dubbo City Softball Association	Total		Jubilee Oval	Jubilee Oval	Jubilee Oval	
Dubbo Athletics Club	Total	262	Barden Park	Barden Park	Barden Park	

Future Open Space Planning

Dubbo Regional LGA

In the context of a growing community, it is important that opportunities for future open space developments are identified and are planned and developed in a way that fulfils the needs of the community. Both private open space developments as well as public developments will be required.

At present, the total minimum area of planned additional open space known to Council is approximately 150 ha, this includes sporting facilities, passive recreation, and potential environmental reserves. Opportunities for new open space offerings have been identified in Urban Release Areas, as well as councils ongoing commitment to improving existing open space.

Macquarie River Foreshore

The Macquarie River North and South Precincts Master Plan identifies an opportunity to strengthen open space provision within future development areas planned for West Dubbo. Within the future North West Development Precinct, the Plan identifies a minimum area ranging from 44-60 hectares of public open space, including parks, urban landcare reserves and active recreation. The structure plan for this area is currently under review by Council and will be finalised separately to this Master Plan.

In addition to the upgrade of existing infrastructure, the Macquarie River North and South Precincts Master Plan identifies opportunity for new facilities, including playgrounds, picnic areas and amenities buildings, as well increased accessibility, and capacity through improved vehicular, pedestrian and cycling access. The master plan includes a minimum of 10ha of active recreation, with opportunity to expand existing sporting complexes across the two precincts. The proposal aims to cater for growing demands for existing sporting clubs located on the site, alongside the consideration of site constraints, such as flooding and environmental conservation, and Dubbo's wider strategic context.

Proposed Macquarie River North-West Precinct

