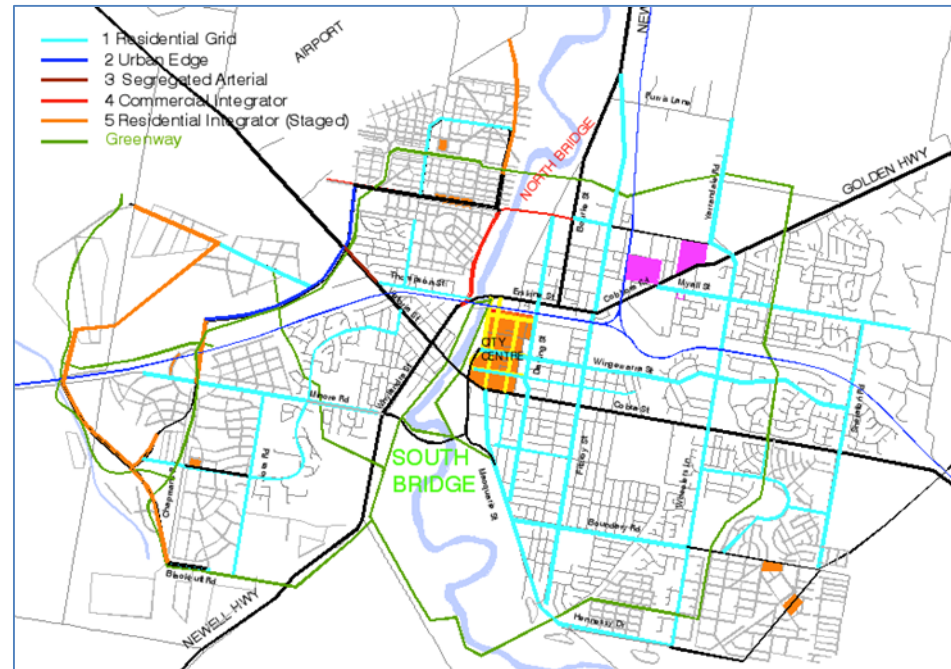


# Dubbo Transportation Strategy 2020



- Proposed to replace the currently adopted *Dubbo Road Transportation Strategy to 2045 – 2012*.
- Many previous strategies exist:
  - *Strategic Transport Master Plan for Dubbo 2056 – STAP 2016* (Response to TfNSW proposal for a new high-level bridge).
  - *Dubbo City Planning and Transportation Strategy 2036 – STAP 2009*.
  - *Dubbo Expanded Urban Area Traffic Management and Contribution Study – PPK 1998*.
  - *Dubbo Urban Area – Traffic Management and Road Contribution Study – TEC 1993* (South Bridge identified).
  - *Dubbo City Road Hierarchy and Truck Route Network – TEC 1991*.

- To respond to the State investment in the River Street Bridge (North Bridge within the Strategy).
- To optimise public and private investment and a contributions system.
- To maintain quality of life for 20,000 new residents.
  - Reduce intrusive traffic.
  - Provide routing options to commuters.
  - Reduce travel time and maintain '10 minute city' status.
- To maintain Dubbo as a competitive community.

- The Strategy determines which major road projects will be funded through developer contributions.
- Project costings are subject to full review. They currently lack detail.
- The Strategy incorporates River Street Bridge.
- The Strategy is not specifically about South Bridge.
- The Strategy is a living document and subject to further review and change.
- The Strategy only shows indicative alignments. Detailed design work will be required.

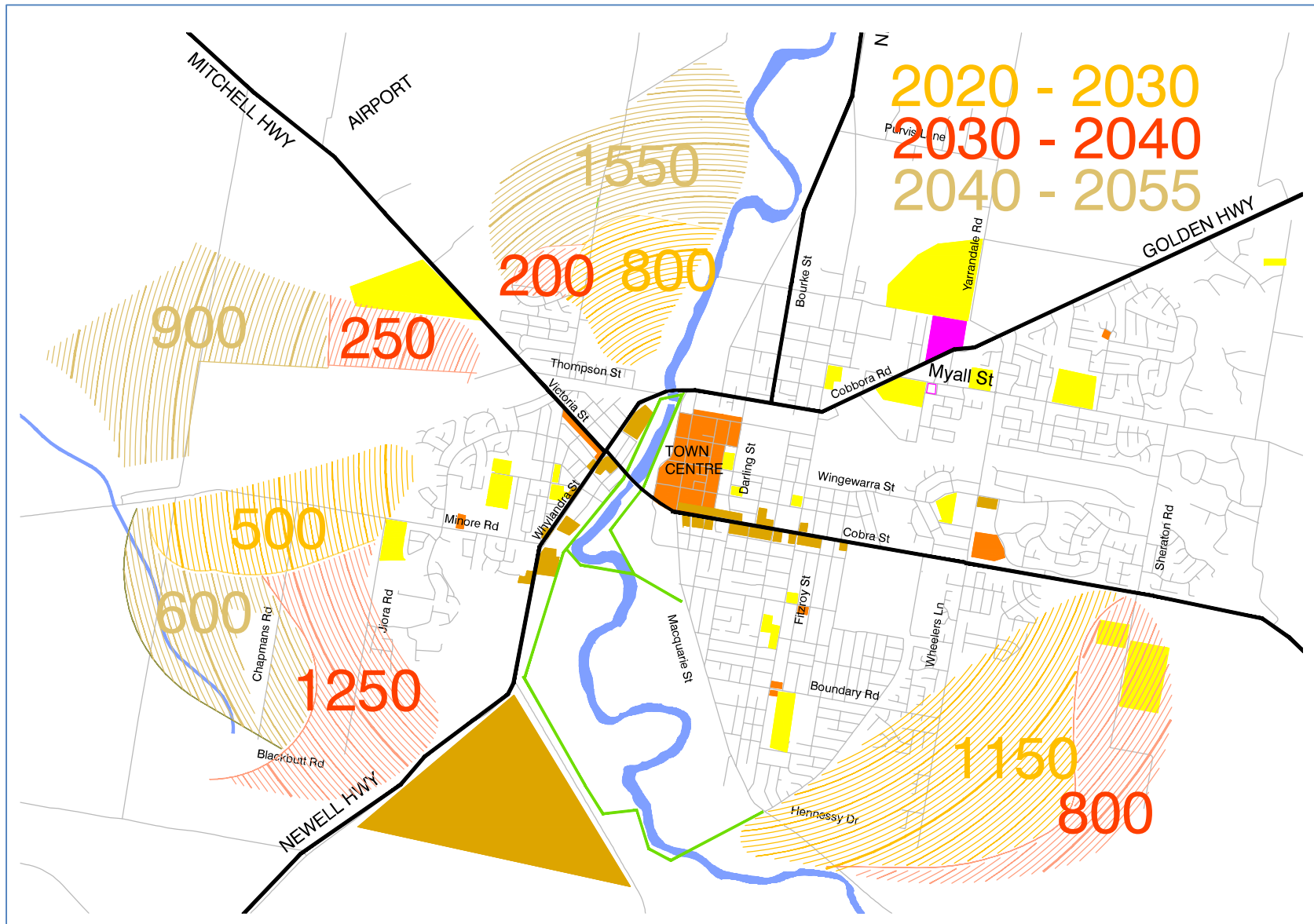
- Acceptance of public submissions between 4 November 2020 until 5 February 2021.
- Council received:
  - 195 online survey responses;
  - 56 individual public submissions; and
  - 12 submissions on behalf of 11 organisations.
- Responses mostly concern South Bridge. Some responses concern the *Dubbo Transportation Strategy 2020*. All are attached to the final report to Council.

# Population Growth of Dubbo (pp 9)

<b>TABLE 2.1 HOUSEHOLDS AND POPULATION PROJECTION</b>					
		Projected Development	Households	Persons per household	Population
Recent Trend	2015 - 2020	(1250)	14796	2.56	37878
10 Year Contribution Plan	2020 - 2025	1250	16046	2.53	40667
	2025 - 2030	1250	17296	2.51	43397
20 Year Rolling Plan	2030 - 2040	2500	19796	2.46	48676
35 Year Project Life	2040 - 2055	3050	22846	2.41	55052

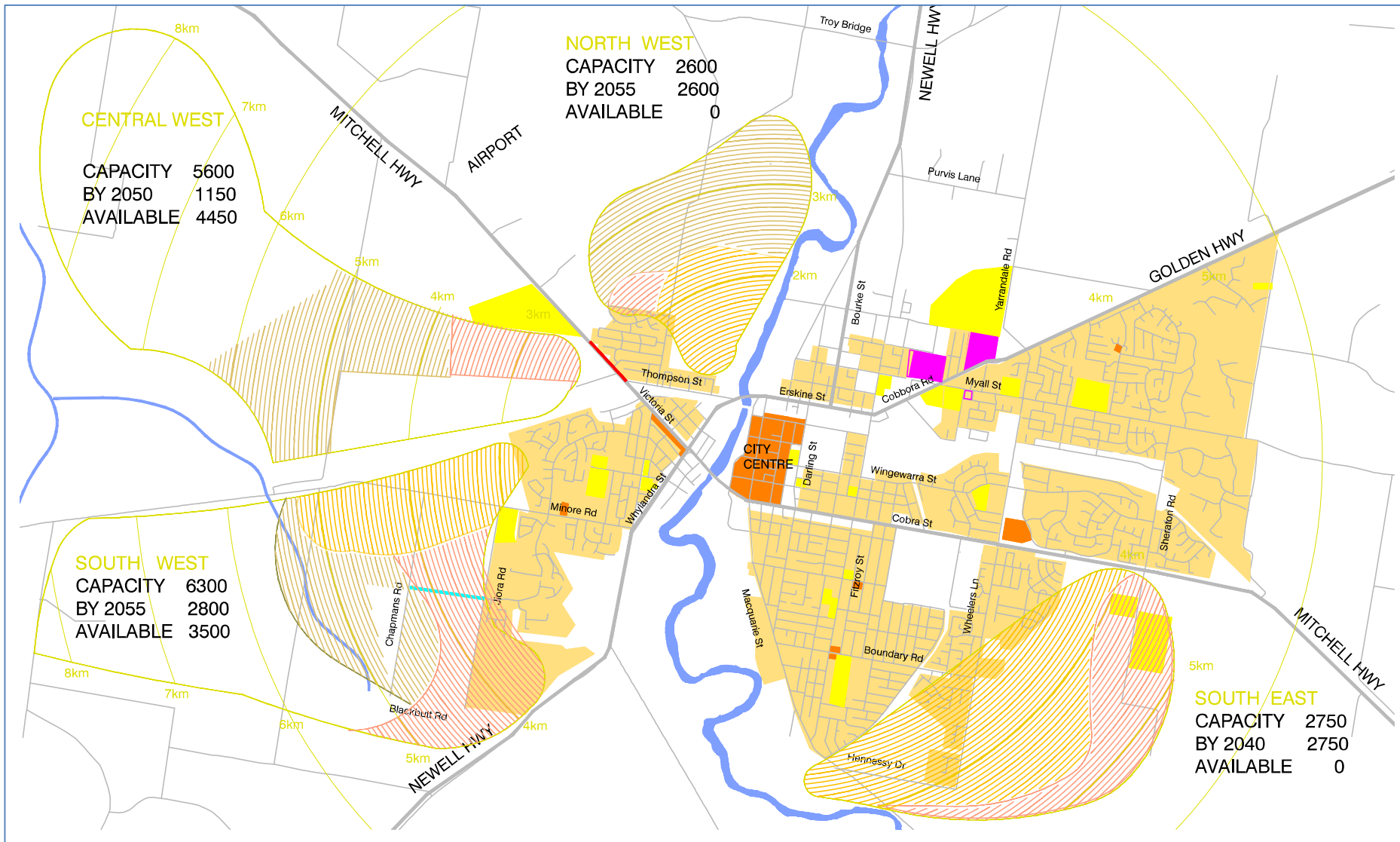
- 250 new households per year.
- Household size is decreasing (aging and single parents) – ABS.

# Predicted Growth Areas of Dubbo (pp 10)



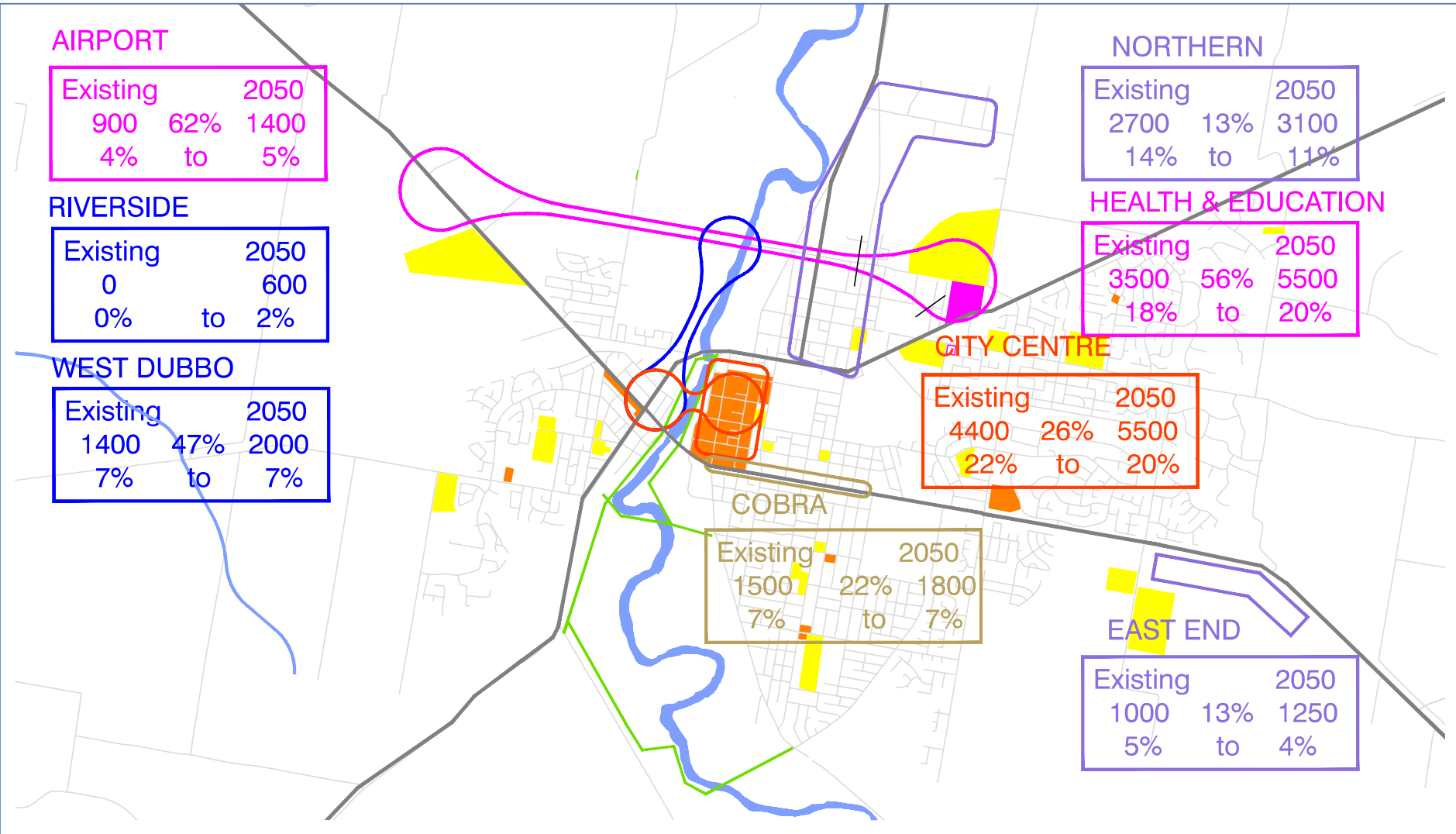


# Predicted Growth Areas of Dubbo (pp 12)

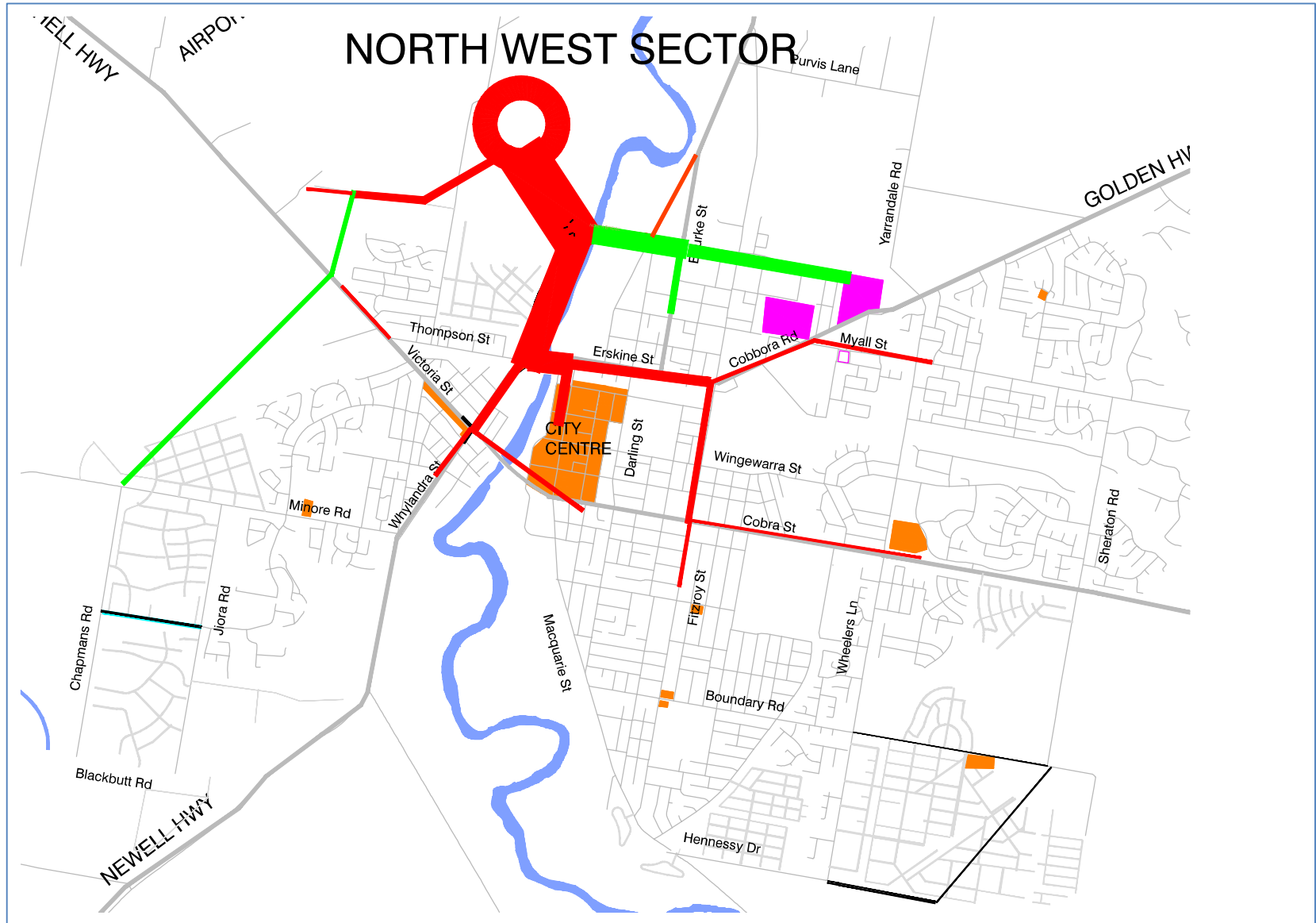




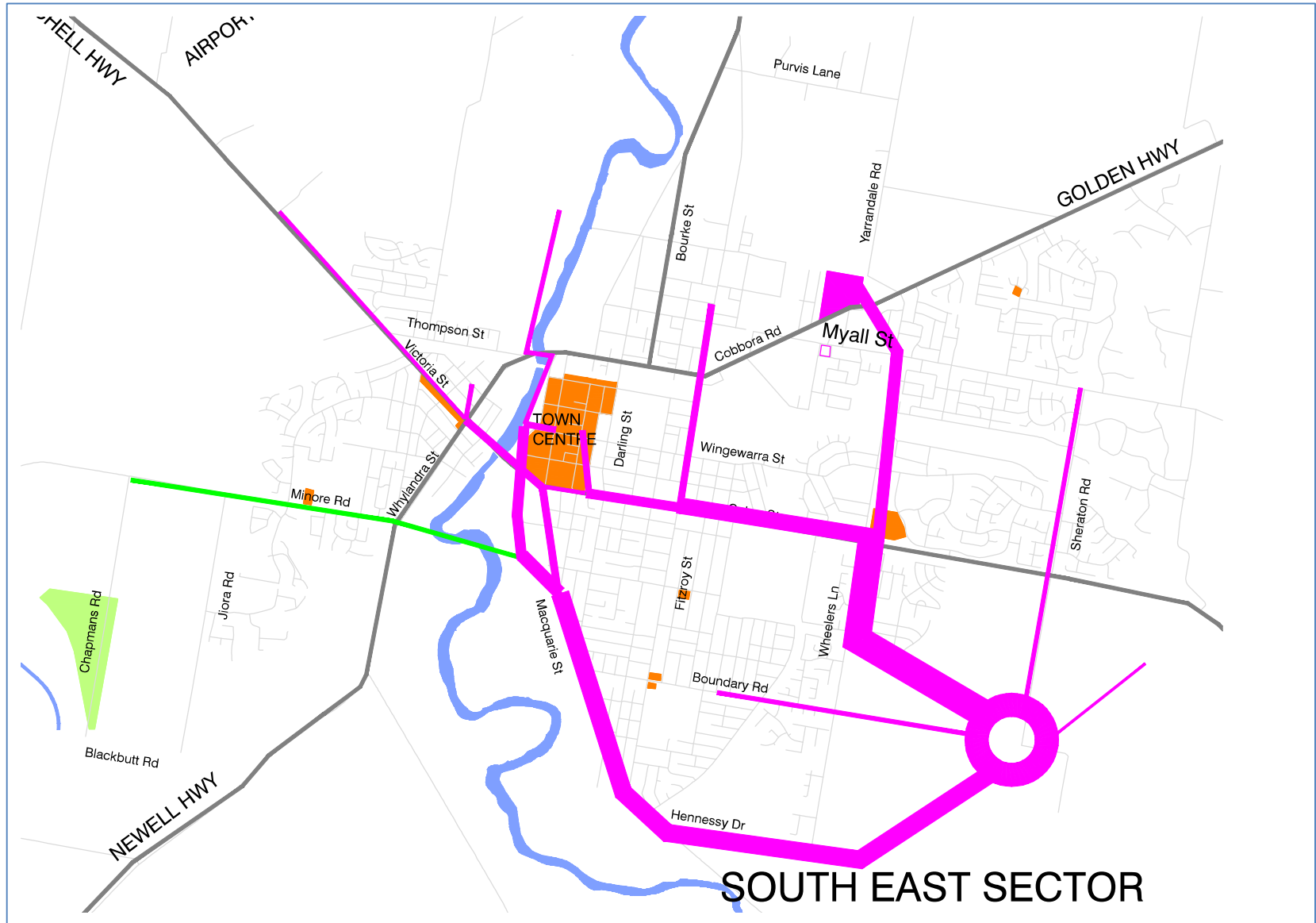
# Employment Hubs – Number of Trips (pp 24)



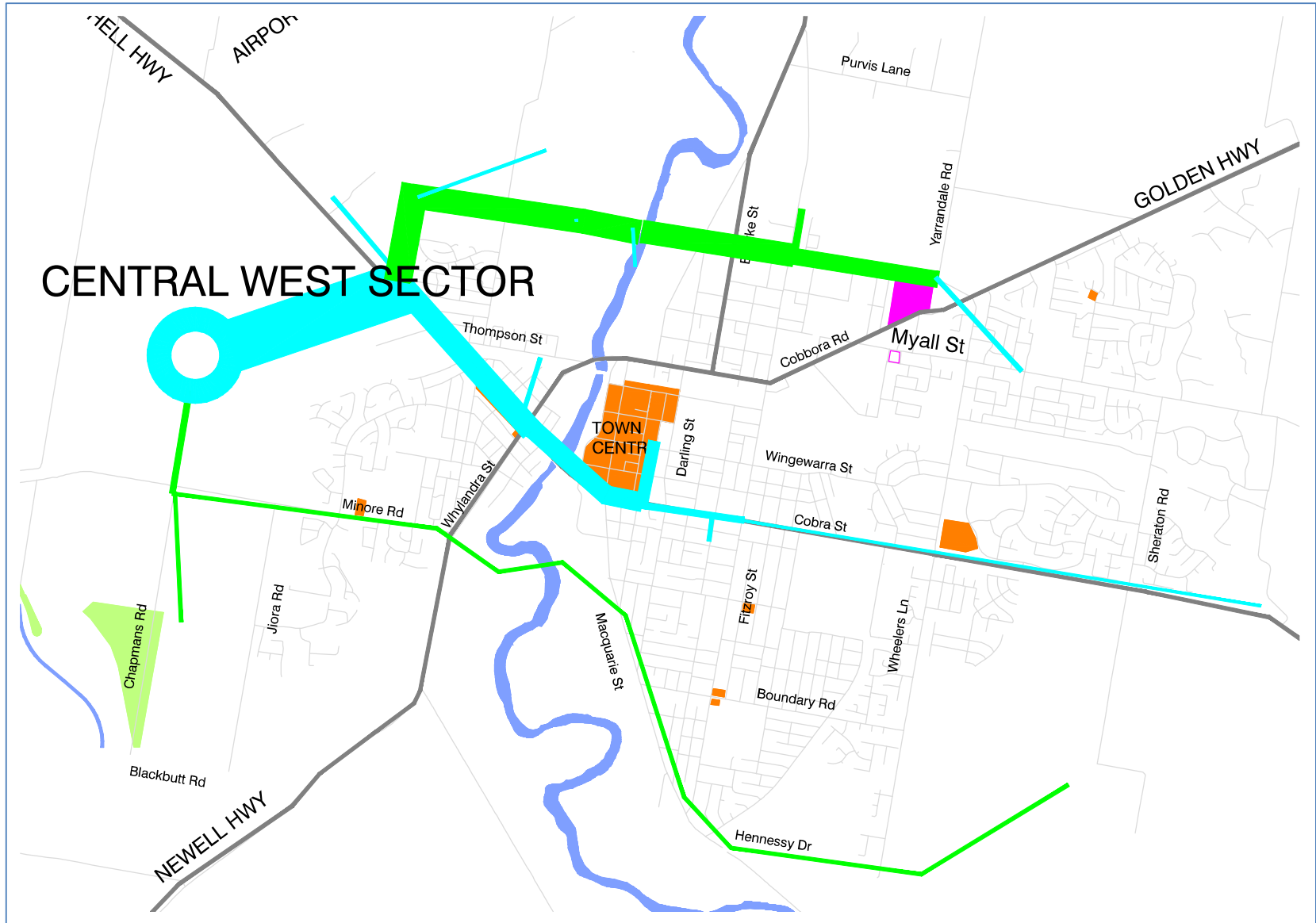
# New Residents – Direction Split of Journey – NW (pp 25)



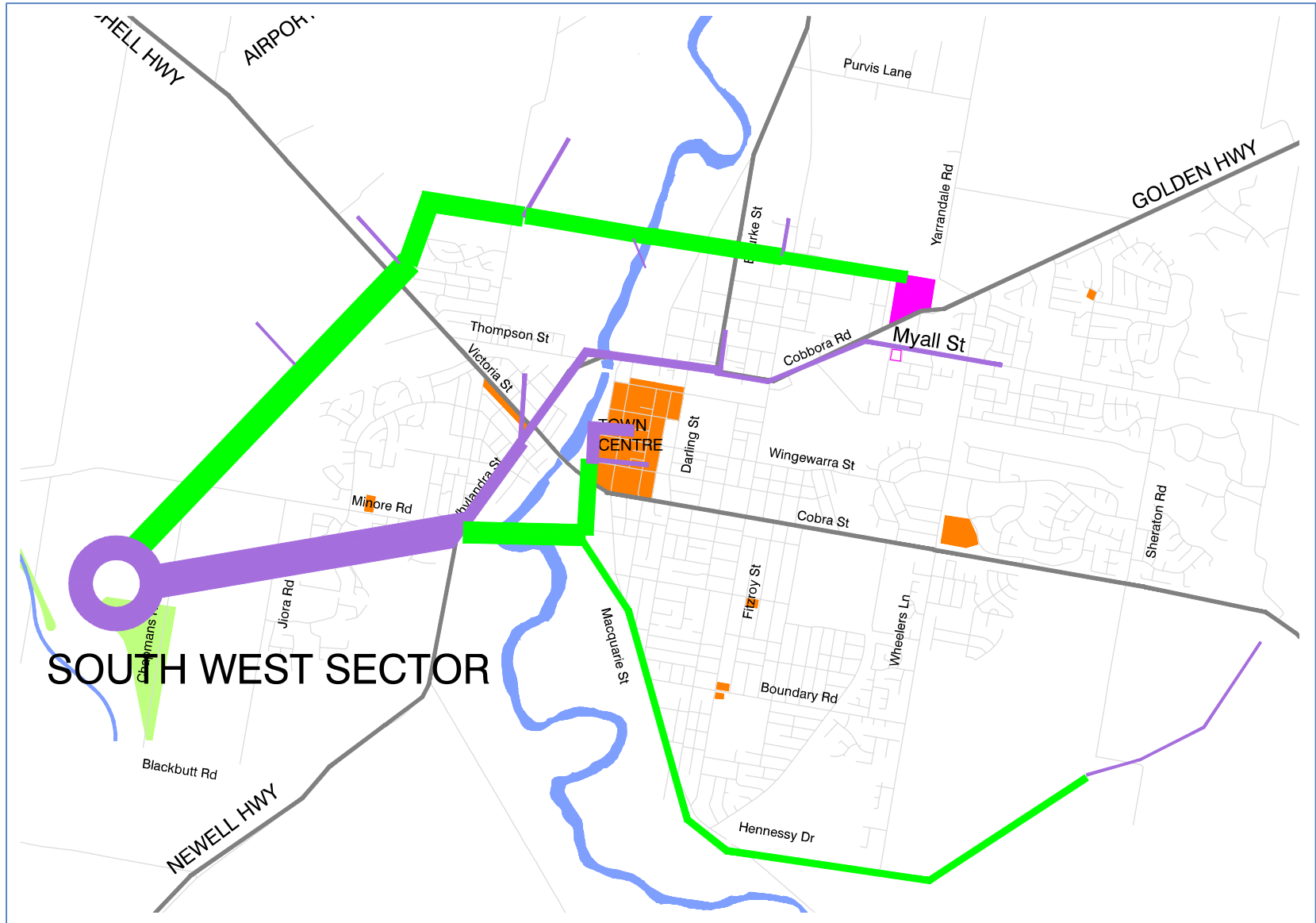
# New Residents – Direction Split of Journey – SE (pp 25)



# New Residents – Direction Split of Journey – CW (pp 25)



# New Residents – Direction Split of Journey – SW (pp 25)



# Indicative Traffic Volumes 2030 (pp 26)

**TABLE 3.2A 2030 INDICATIVE USE OF NEW MAJOR INFRASTRUCTURE**  
DEMAND FOR 2030 BY NEW DEVELOPMENT ONLY; EXISTING TRAFFIC WILL ALSO DIVERT TO NEW FACILITIES

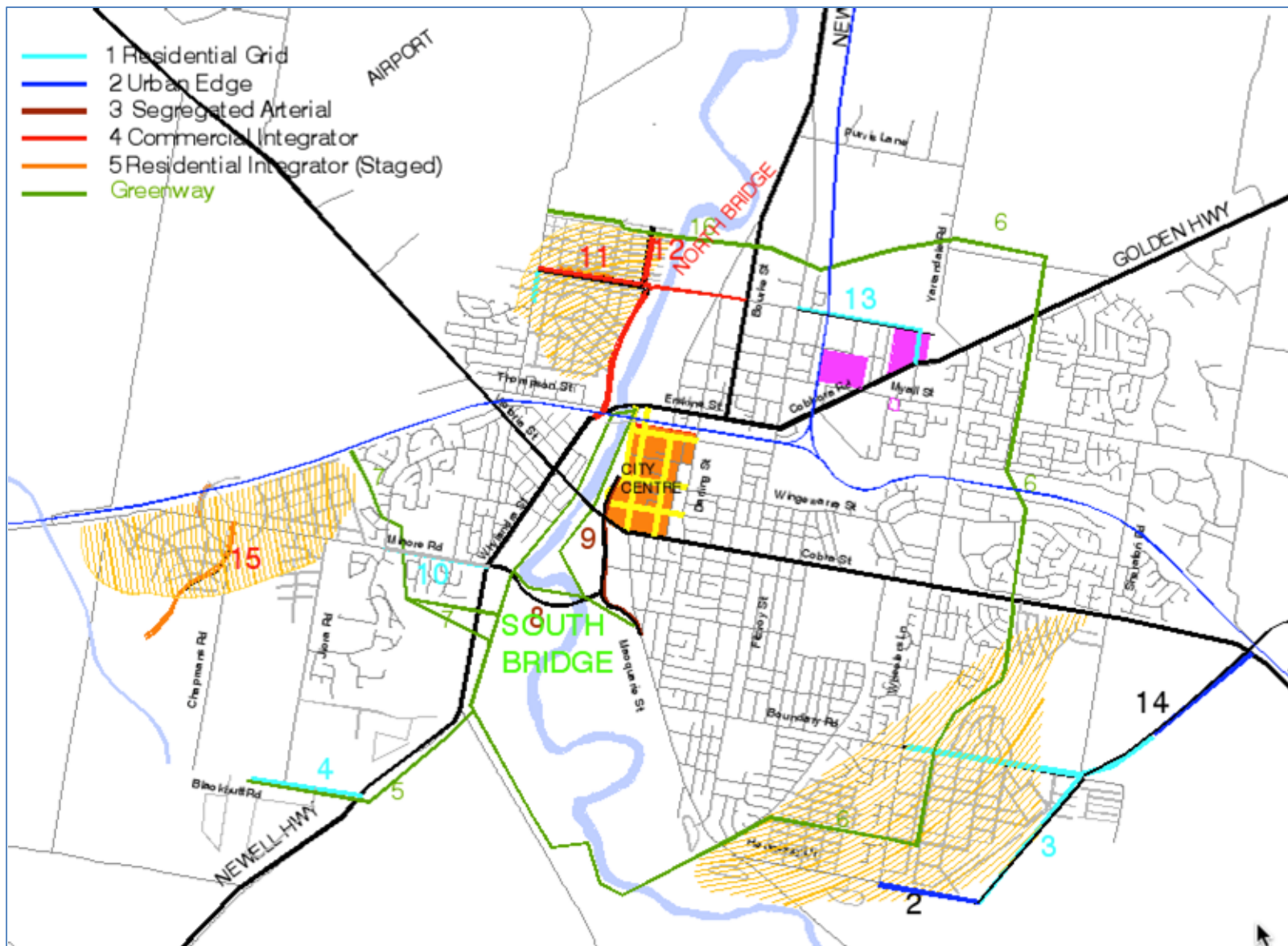
MAJOR NEW INFRASTRUCTURE	PEAK TRAFFIC GENERATION								TOTAL DAILY TRAFFIC 0.1
	NW Sector		SE Sector		CW Sector		SW Sector		
	Total Gen	800 Additional	Total Gen	1450 Additional	Total Gen	0 Additional	Total Gen	700 Additional	
	Estimated % using	Traffic	Estimated % using	Traffic	Estimated % using	Traffic	Estimated % using	Traffic	
North Bridge	40%	320	0%	0	40%	0	40%	280	6000
South Bridge	0%	0	8%	116	12%	0	41%	287	4030
Bligh St	0%	0	10%	145	0%	0	22%	154	2990
Hennessy	10%	80	18%	261	15%	0	15%	105	4460
Western Railway	2%	16	2%	29	3%	0	2%	14	590



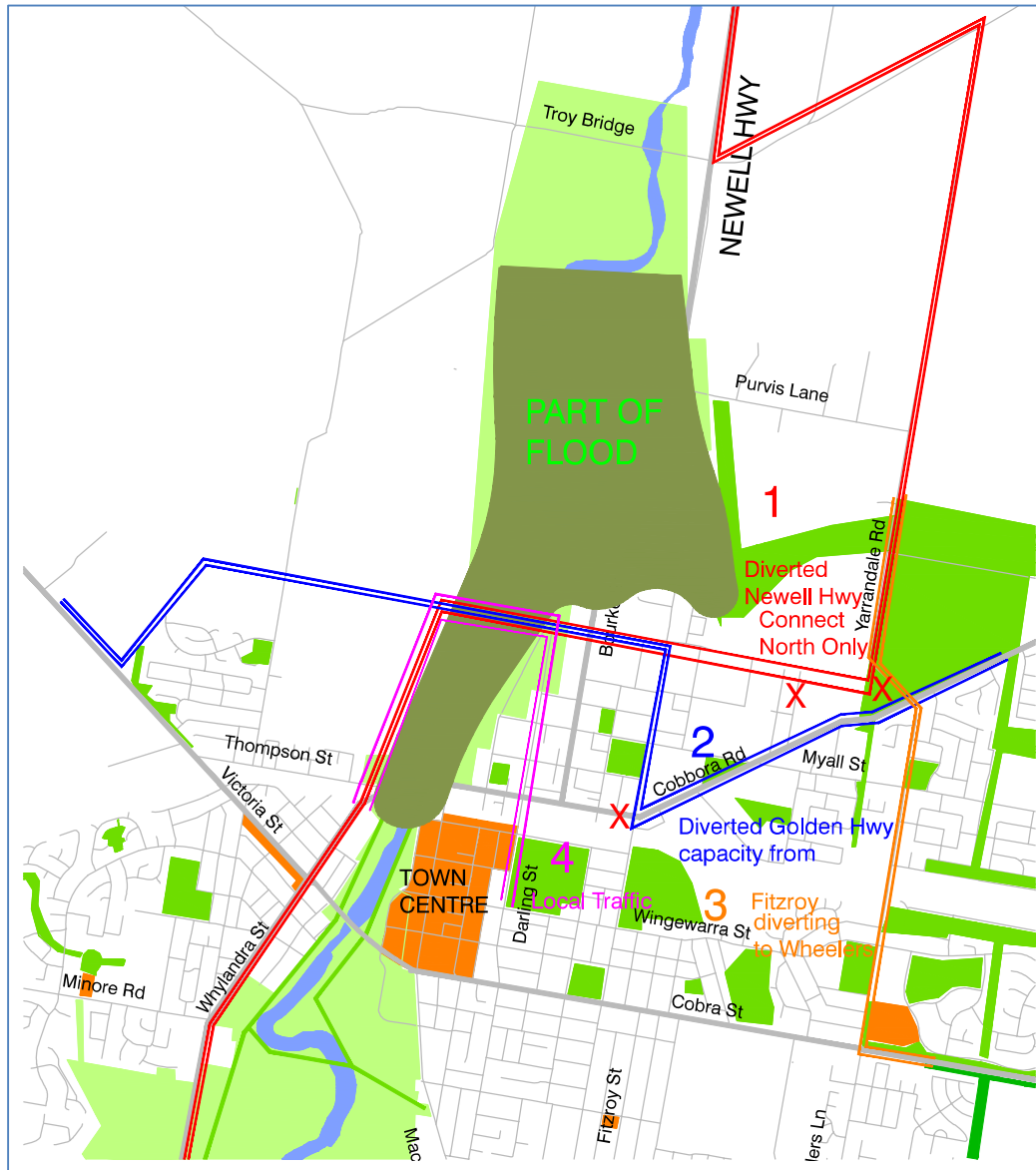
# Indicative Traffic Volumes 2055 (pp 26)

MAJOR NEW INFRASTRUCTURE	PEAK TRAFFIC GENERATION								TOTAL DAILY TRAFFIC
	NW Sector		SE Sector		CW Sector		SW Sector		
	Estimated % using	Cumulative Additional	Estimated % using	Cumulative Additional	Estimated % using	Cumulative Additional	Estimated % using	Cumulative Additional	
North Bridge	36%	702	0%	0	31%	357	31%	760	18180
South Bridge	0%	0	15%	338	8%	92	32%	784	12135
Bligh St	0%	0	10%	225	0%	0	10%	245	4700
Hennessy	5%	98	25%	563	8%	92	11%	270	10215
Western Railway	8%	156	7%	158	16%	184	41%	1005	15020

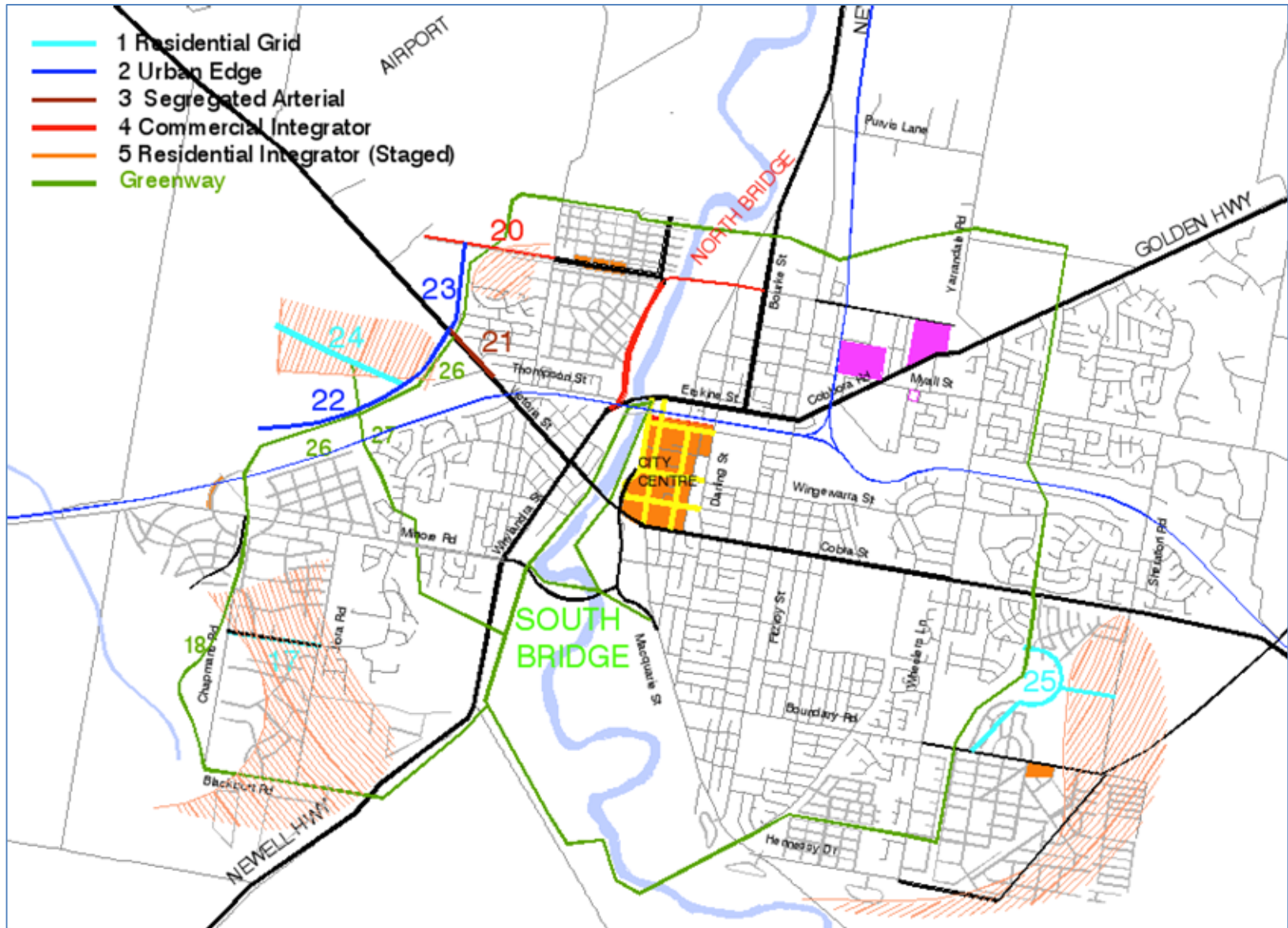
# 2030 – 10 Year Infrastructure Plan (pp 34)



# River Street Bridge and Flooding (pp 37)

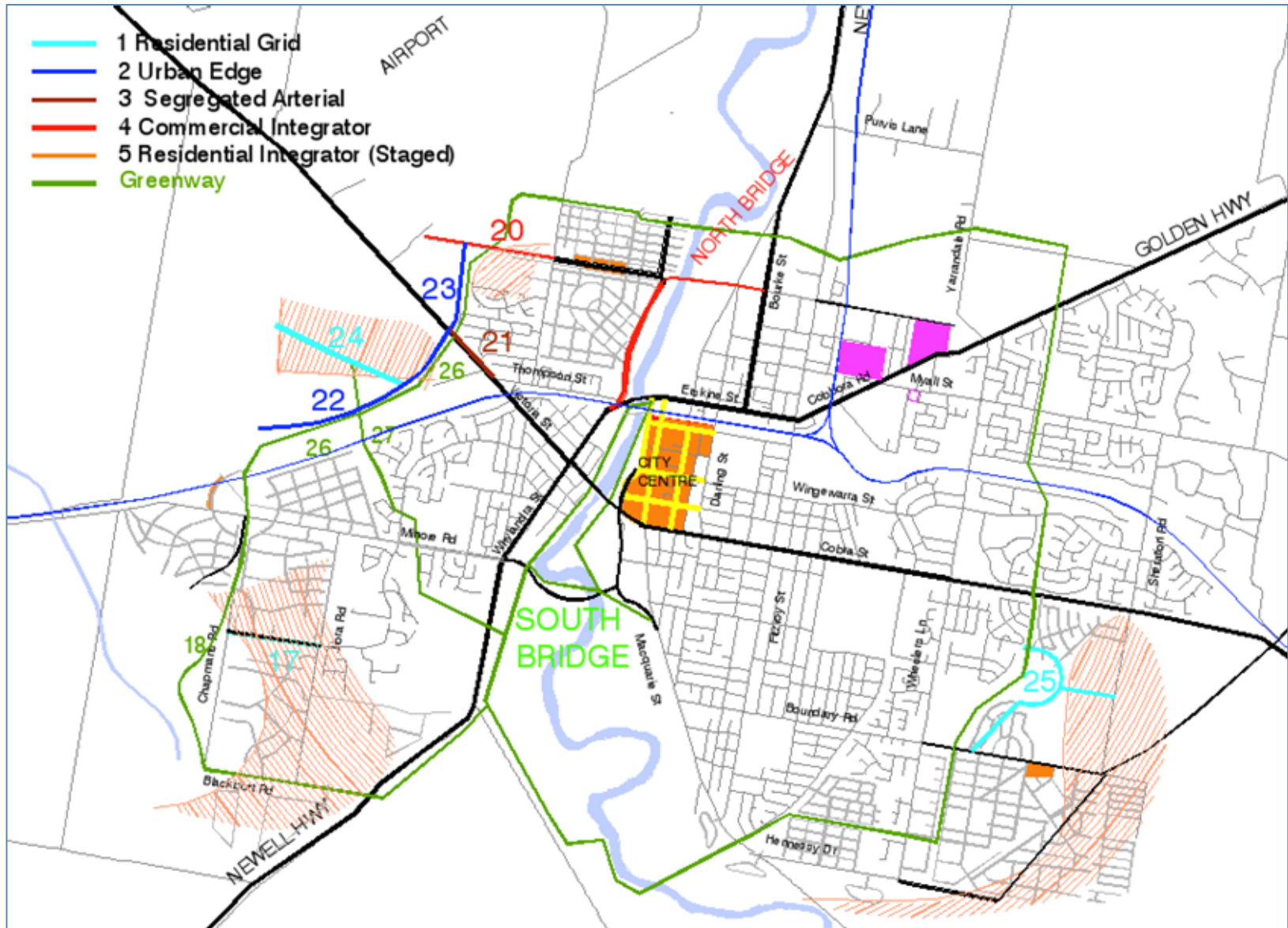


# 2040 – 10 to 20 Year Infrastructure Plan (pp 42)





# 2055 – 35 Year Infrastructure Plan (pp 47)



# Indicative Long-term Projects (pp 52)

